



How to Find Your Mower's Part/Serial Number

Zero-Turn Mowers

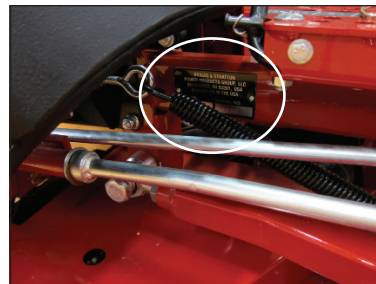
Facing the front, the serial number plate is located on the left hand side. The plate is attached to the frame about mid way and is normally above the discharge chute. Sometimes the plate will be under the gas tank.



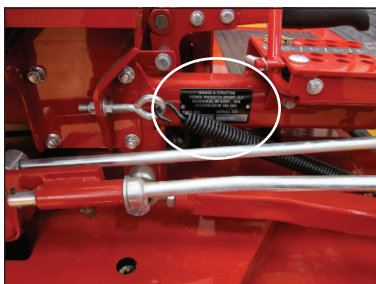
IS® 5100Z



IS® 3200Z



IS® 3100Z



IS® 3100Z PROPANE



IS® 2600Z



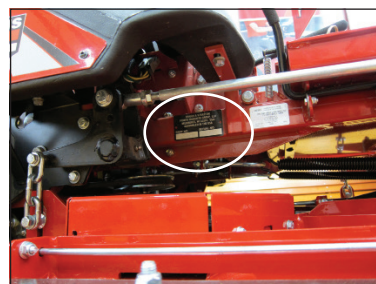
IS® 2500Z



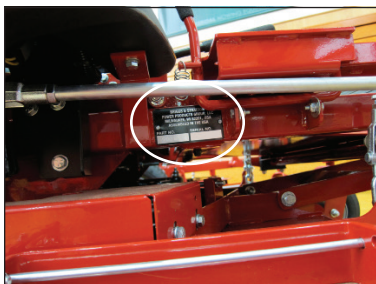
IS® 2100Z



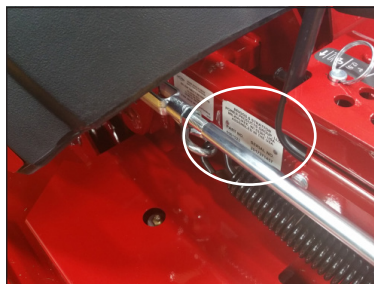
IS® 2000Z



IS® 700Z



IS® 600Z



F320Z



F210Z



F160Z



SRS™ Z2



How to Find Your Mower's Part/Serial Number

Zero-Turn Mowers (Cont.)



Evolution

The plate is located behind the deck lift lever on the right and might be hidden.

Out-Front Mowers



ProCut™ S

The serial number plate is on the center column behind the engine.



F800X

The plate is located under the seat.

Walk-Behind Mowers



FW35

Plate is located on the engine deck.



FW25

The serial number plate is located on the left of the mower, in front of the main tire when looking at it from the front.



ComfortControl™ DD

The serial number plate is located on the right of the mower, in the back, next to the controls when looking at it from the front.



HydroCut™

The plate is located on the back corner of the right side of the mower when facing it from the front.