



Parts Manual F60Z Series

Zero-Turn Riding Mower



Models:	Description:
5901548	F60Z Series w/ 36" Mower Deck (F60ZB2536)
5901549	F60Z Series w/ 36" Mower Deck (F60ZKAV1936)

Briggs and Stratton Power Products Group, LLC.
5375 North Main Street
Munnsville, NY 13409 USA
800-933-6175

5105079
Revision -
Rev. Date: 11/11/16
TP 400-5105079---M5-F

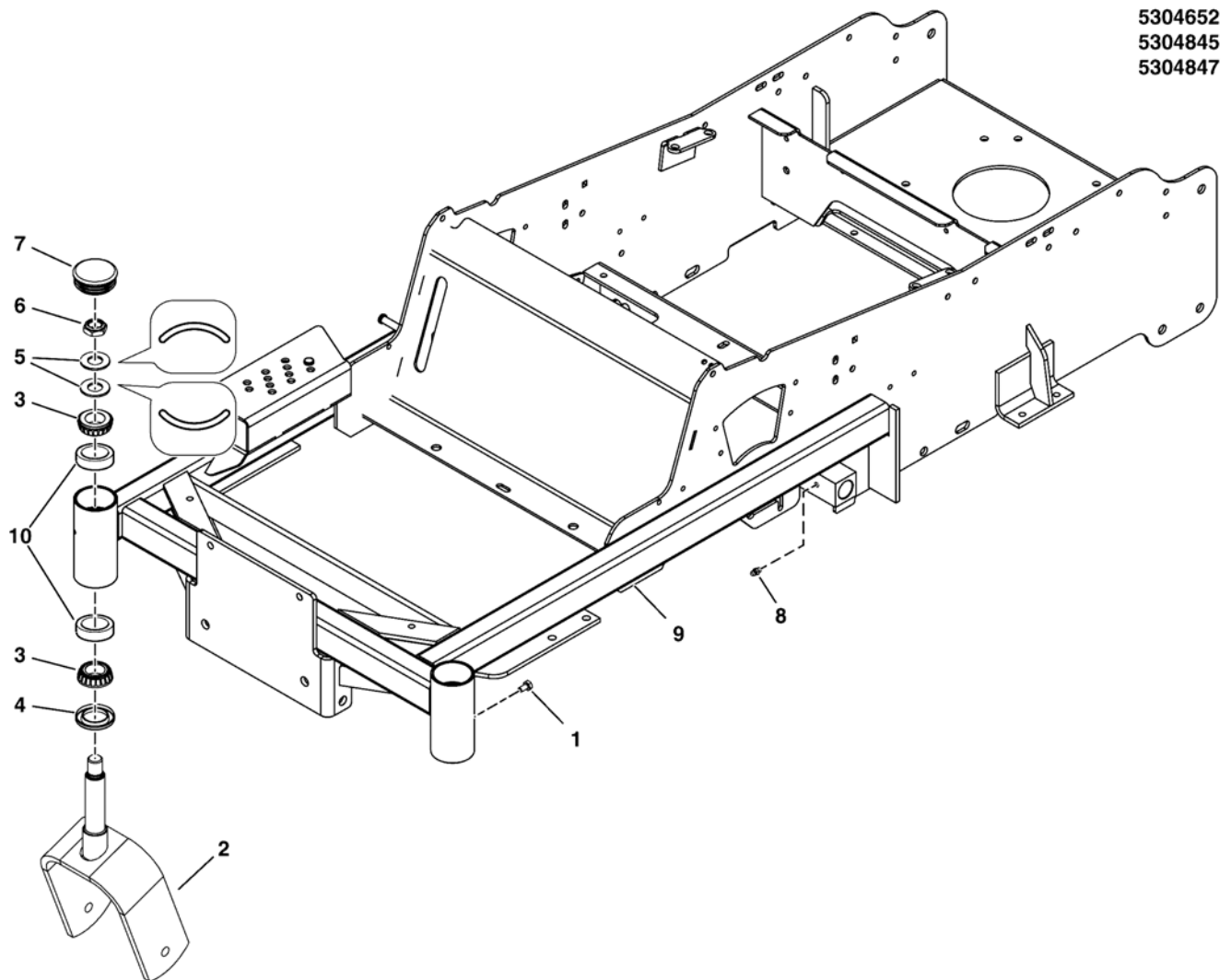
Not for
Reproduction

MODEL COMPONENTS	PAGE
Main Frame & Front Casters Group	4
Rear Bumper Group	6
Seat Mount and Floor Group	8
Fuel Tank and Mount Group	10
Fuel Supply Hose, Tank Replacement Parts, and Evap Group	12
Instrument Control Panel Group	14
Engine & PTO Group - Briggs & Stratton	16
Engine & PTO Group - Kawasaki	18
Transaxle Drive Group	20
Motion Control Group	22
Hydraulic Group	24
Parking Brake Group	26
Deck Lift Group	28
Wheel & Tire Group	30
Decal Group - Brand & Model	32
Decal Group - Safety & Operation	34
36" Mower Deck Group - Hanger Chains	36
36" Mower Deck Group - Pulleys, Belt & Idler Arm	38
36" Mower Deck Group - Housing, Covers, Spindles & Blades	40
Spindle Service Parts - 5061095	42
Electrical Group - Briggs & Stratton	44
Electrical Group - Kawasaki	46
Electrical Schematics - Small ZTR, B&S 44T977	48-51
Electrical Schematics - Small ZTR, Kawi FX600V	52-55
Torque Specification Chart	Inside Back Cover

Not for
 Reproduction

Main Frame & Front Casters Group

NOTE: Unless noted otherwise,
use the standard hardware torque
specification chart.



The above parts group applies to the following Mfg. Nos.:

5901548

5901549

Main Frame & Front Casters Group

REF NO	PART NO.	QTY.	DESCRIPTION
1	5025457	2	BOLT, 1/4-28 X 1/2, GD5 CZ
2	5402539B	2	WELD, CASTER YOKE, IS500Z - RED
3	5020884	4	BEARING, TAPERED ROLLER, 1
4	5021072	2	SEAL, GREASE
5	5025449	4	WASHER, BELLEVILLE - 1.500 X .755
6	5025448	2	NUT, 3/4-16, HEX JAM NYLON LOCK
7	5102929	2	CAP, LOW PROFILE, STEEL
8	5020095	2	GREASE FITTING, 1/4-28 STRAIGHT
9	--	1	* WELD, MAIN FRAME, F60Z - RED * If frame is damaged, call 1-800-933-6175 ext. 709
10	5020883	2	CUP, BEARING (SV)

Not for
Reproduction

Footnotes

The above parts group applies to the following Mfg. Nos.:

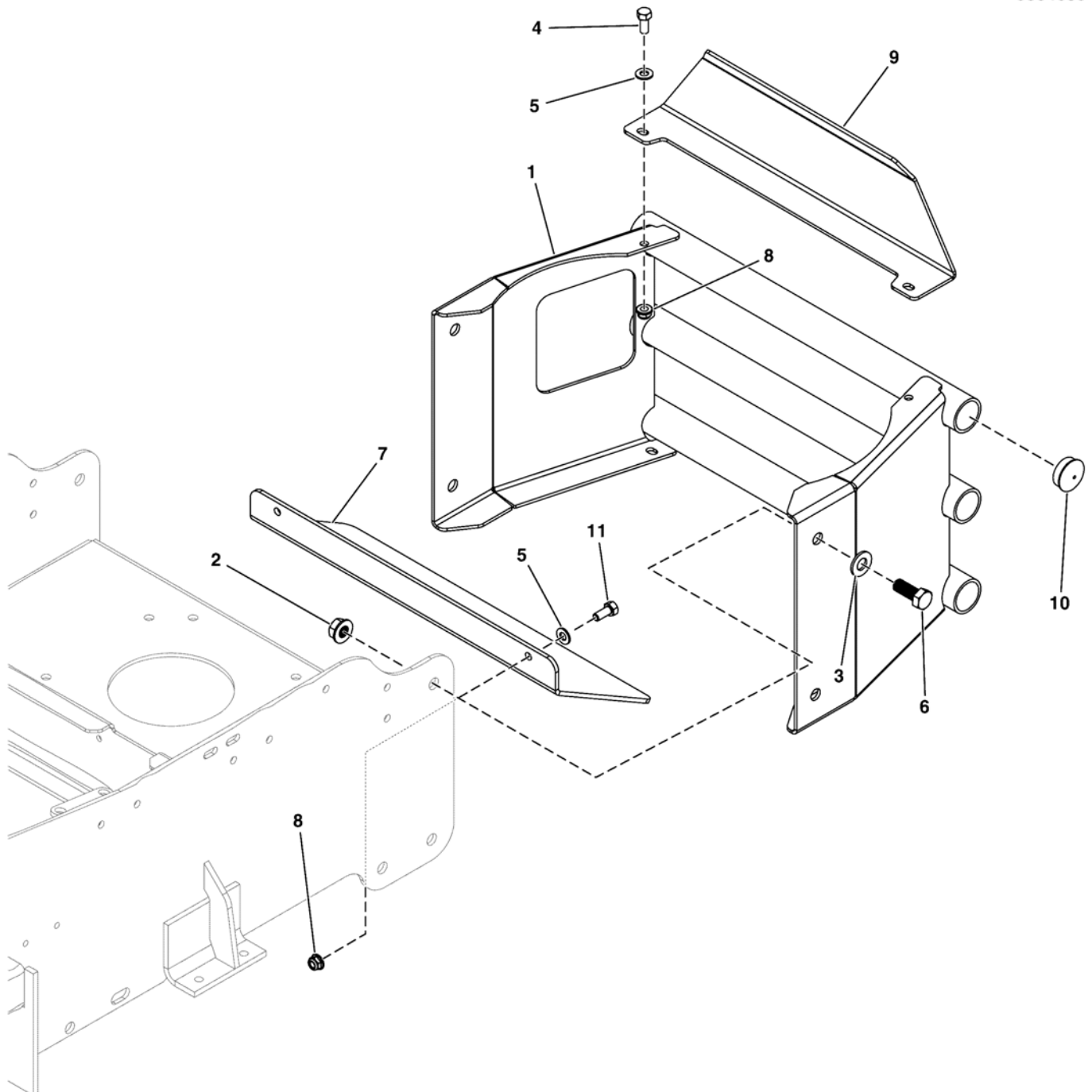
5901548

5901549

Rear Bumper Group

NOTE: Unless noted otherwise,
use the standard hardware torque
specification chart.

5304635



The above parts group applies to the following Mfg. Nos.:

5901548

5901549

Rear Bumper Group

REF NO	PART NO.	QTY.	DESCRIPTION
1	5415153B	1	WELD, BUMPER, F60Z - RED
2	5025396	4	NUT, 1/2-13 HEX NYLOCK FLANGE
3	5025158	4	WASHER, 1/2 SAE
4	5025011X6	2	BOLT, 5/16-18 X 3/4 GD5 CZ
5	5025155	4	WASHER, 5/16 SAE
6	5025017X10	4	BOLT, 1/2-13 X 1-1/4 GD5 CZ
7	5403593A	1	SHIELD, MUFFLER - BLK
8	5025392	4	NUT, 5/16-18 HEX NYLOCK FLANGE
9	5415154B	1	PLATE, CARB GUARD, F60Z - RED
10	5023484	6	PLUG, PANEL, 1.25 - BLACK
11	5025011X8	2	BOLT, 5/16-18 X 1 GD5 CZ

Not for
Reproduction

Footnotes

The above parts group applies to the following Mfg. Nos.:

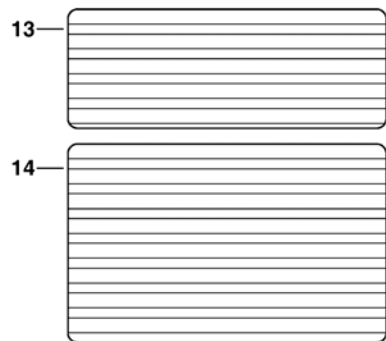
5901548

5901549

Seat Mount and Floor Group

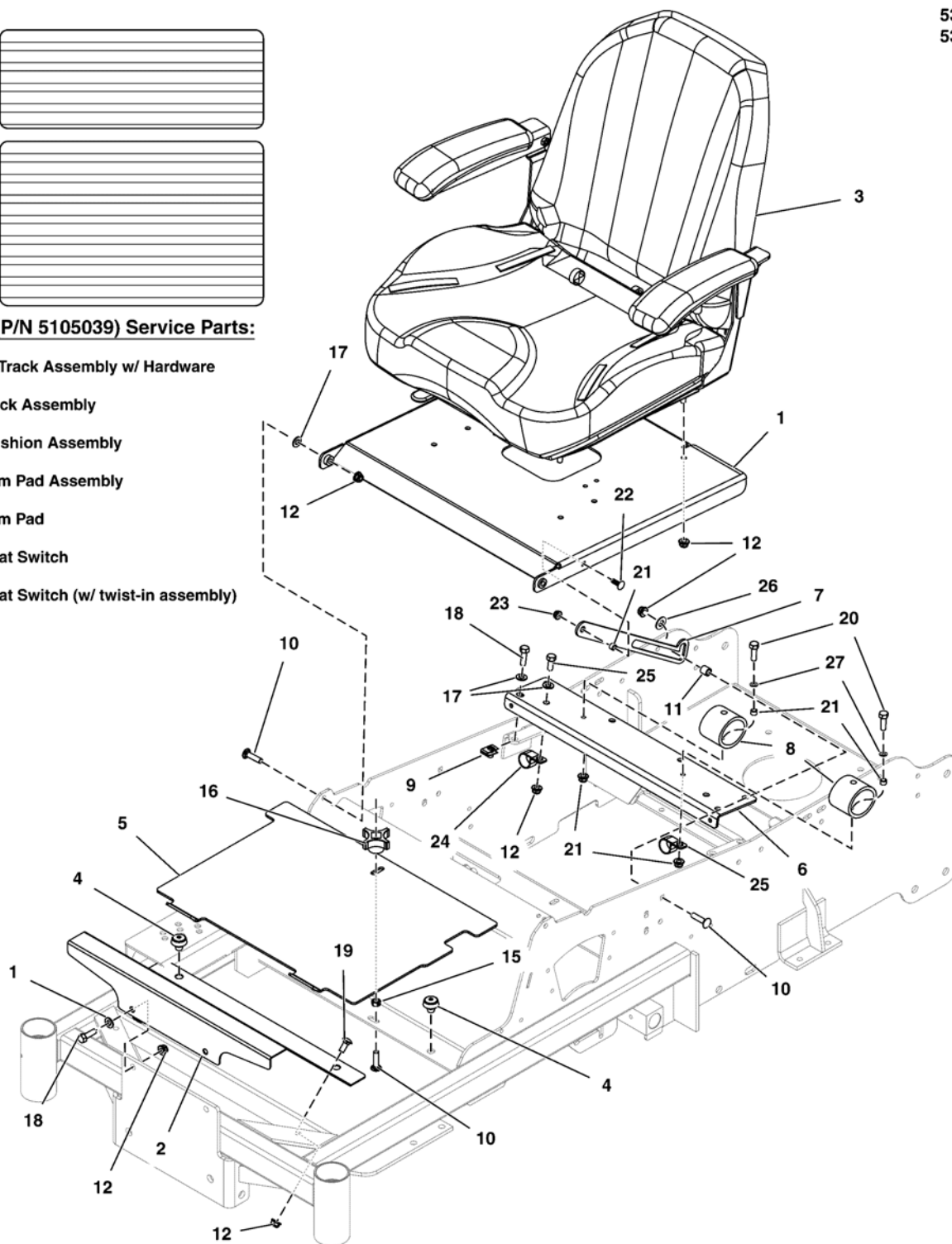
NOTE: Unless noted otherwise, use the standard hardware torque specification chart.

5304636
5304839



Seat (P/N 5105039) Service Parts:

- 28 - 4" Track Assembly w/ Hardware
- 29 - Back Assembly
- 30 - Cushion Assembly
- 31 - Arm Pad Assembly
- 32 - Arm Pad
- 33 - Seat Switch
- 34 - Seat Switch (w/ twist-in assembly)



The above parts group applies to the following Mfg. Nos.:

5901548
5901549

Seat Mount and Floor Group

REF NO	PART NO.	QTY.	DESCRIPTION
		2	
1	5415237B	1	WELD, PLATE, SEAT MOUNT - RED
2	5410382B	1	PLATE, FLOOR RIGID - RED
3	5105039	1	SEAT, 907 WITH ARM RESTS
4	197546	4	MNT, VBRTN, RBBR
5	5410381B	1	PLATE, REMOVABLE FLOOR - RED
6	5415416B	1	MOUNT, SEAT STOP - RED
7	5415678A	1	PLATE, SEAT STOP LATCH - BLK
8	5105128	2	BUMPER, GBR-6, 200 IN-LBS
9	5022308	4	BODY CLIP, 5/16-18-7GA MATERIAL
10	5025145X10	4	BOLT, 5/16-18 X 1-1/4, CARRIAGE CZ
11	5102148	1	SPACER, .33 X .50 X .50, CZ
12	5025392	13	NUT, 5/16-18 HEX NYLOCK FLANGE
13	5101374	1	SAFETY WALK, FLOOR REST, 6.00 X 16.00
14	5101333	1	SAFETY WALK, FLOOR PLATE, S50X, 10X16
15	80003675	1	NUT, 5/16-18, HEX, CNTR LK,ZINC PHOS/OIL
16	1670578	1	KNOB-INT THR .312-18 4-ARM 2.12WD 1.06LG
17	5025155	10	WASHER, 5/16 SAE
18	5025011X8	8	BOLT, 5/16-18 X 1 GD5 CZ
19	5025145X6	2	BOLT, 5/16-18 X 3/4, CARRIAGE
20	5025010X6	2	BOLT, 1/4-20 X 3/4 GD5 CZ
21	5021878	3	SPACER, .25 X .37 X .25
22	80003518	1	BOLT,1/4-20X0.750,GR5,STD NECK,SQ,ZC/CL
23	5025391	3	NUT, 1/4-20 HEX NYLOCK FLANGE
24	5025558	2	CLAMP, VINYL INSULATED, 1.00
25	5101932	1	CLAMP, VINYL INSULATED, .625
26	5025337	1	WASHER, 5/16 USS
27	5025154	1	WASHER, 1/4 SAE
28	5104741X1	1	4" SL TRACK SET - 9" FLAT - W/HDWR (SV)
29	5104741X3	1	BACK ASSEMBLY FOR 907 (SV)
30	5104741X4	1	CUSHION ASSEMBLY FOR 907 (SV)
31	5104681X3	1	ARM ASM, LH & RH, C13 SEAT (SV)
32	5104681X4	1	ARM PAD, C13 SEAT (SV)
33	7023354	1	SWITCH, SEAT (SV)
34	5100541	1	SWITCH, SEAT W/ TWIST-IN ASSEMBLY (SV)

Footnotes

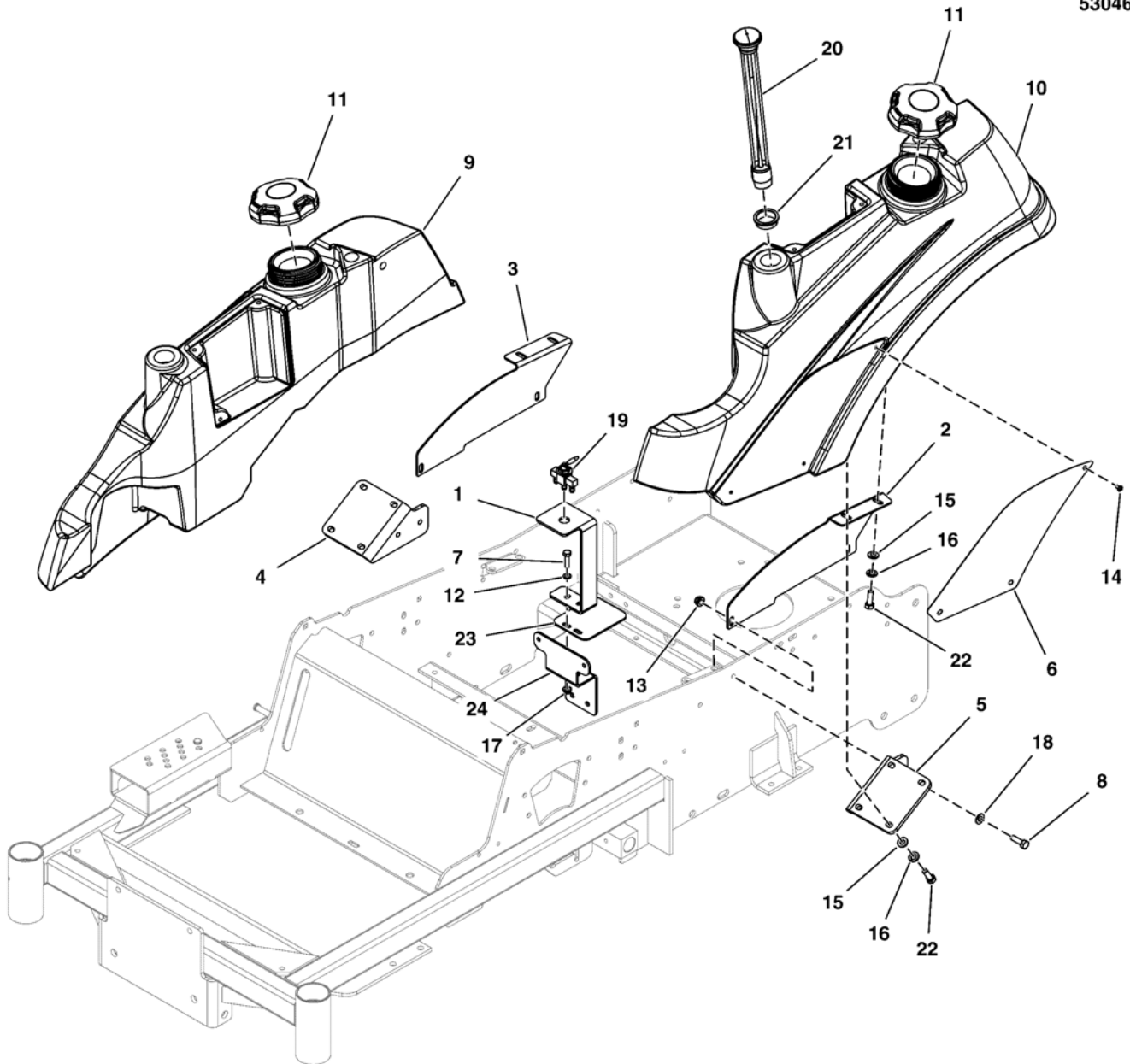
The above parts group applies to the following Mfg. Nos.:

5901548
5901549

Fuel Tank and Mount Group

NOTE: Unless noted otherwise,
use the standard hardware torque
specification chart.

5304637



The above parts group applies to the following Mfg. Nos.:

5901548

5901549

Fuel Tank and Mount Group

REF NO	PART NO.	QTY.	DESCRIPTION
1	5415861A	1	BRACKET, FUEL VALVE, S50XT/F60Z - BLK
2	5415568B	1	PLATE, REAR TANK SUPPORT, LH -RED
3	5415567B	1	PLATE, REAR TANK SUPPORT, RH -RED
4	5415255A	1	PLATE, REAR TANK MOUNT, RH, F60Z- BLK
5	5415254A	1	PLATE, REAR TANK MOUNT, LH, F60Z - BLK
6	5400250B	2	PLATE, BADGE - RED
7	5025013X12	1	BOLT, 3/8-16 X 1-1/2 GD5 CZ
8	5025011X8	4	BOLT, 5/16-18 X 1 GD5 CZ
9	5104966	1	TANK, FUEL, F60Z, RH
10	5104965	1	TANK, FUEL, F60Z, LH
11	5103005	2	FUEL CAP, 3-1/2", MANAGED VENT OUT, 12"
12	5025394	1	NUT, 3/8-16 HEX NYLOCK FLANGE
13	5025392	6	NUT, 5/16-18 HEX NYLOCK FLANGE
14	5025386	6	SCREW, #10-24 X 3/8 ALLEN BHBZ
15	5025292	12	WASHER, 5/16 F436 FLAT
16	5025170	12	WASHER, 5/16 LOCK CZ
17	5025156	1	WASHER, 3/8 SAE
18	5025155	6	WASHER, 5/16 SAE
19	5023358	1	VALVE, FUEL SHUT-OFF, 11772
20	5022917	2	GAUGE, FUEL, 12 (SV)
21	5022917X1	2	GROMMET, FUEL GAUGE (SV)
22	5025011X6	12	BOLT, 5/16-18 X 3/4 GD5 CZ
23	--	-	SEE ELECTRICAL GROUP (Briggs & Stratton Models Only)
24	--	-	SEE HYDRAULIC GROUP

Footnotes

The above parts group applies to the following Mfg. Nos.:

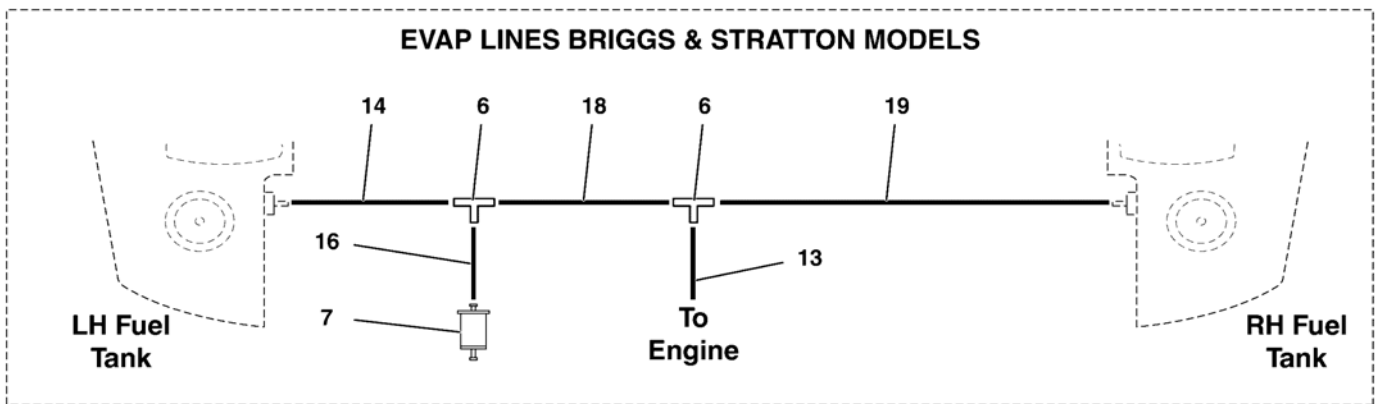
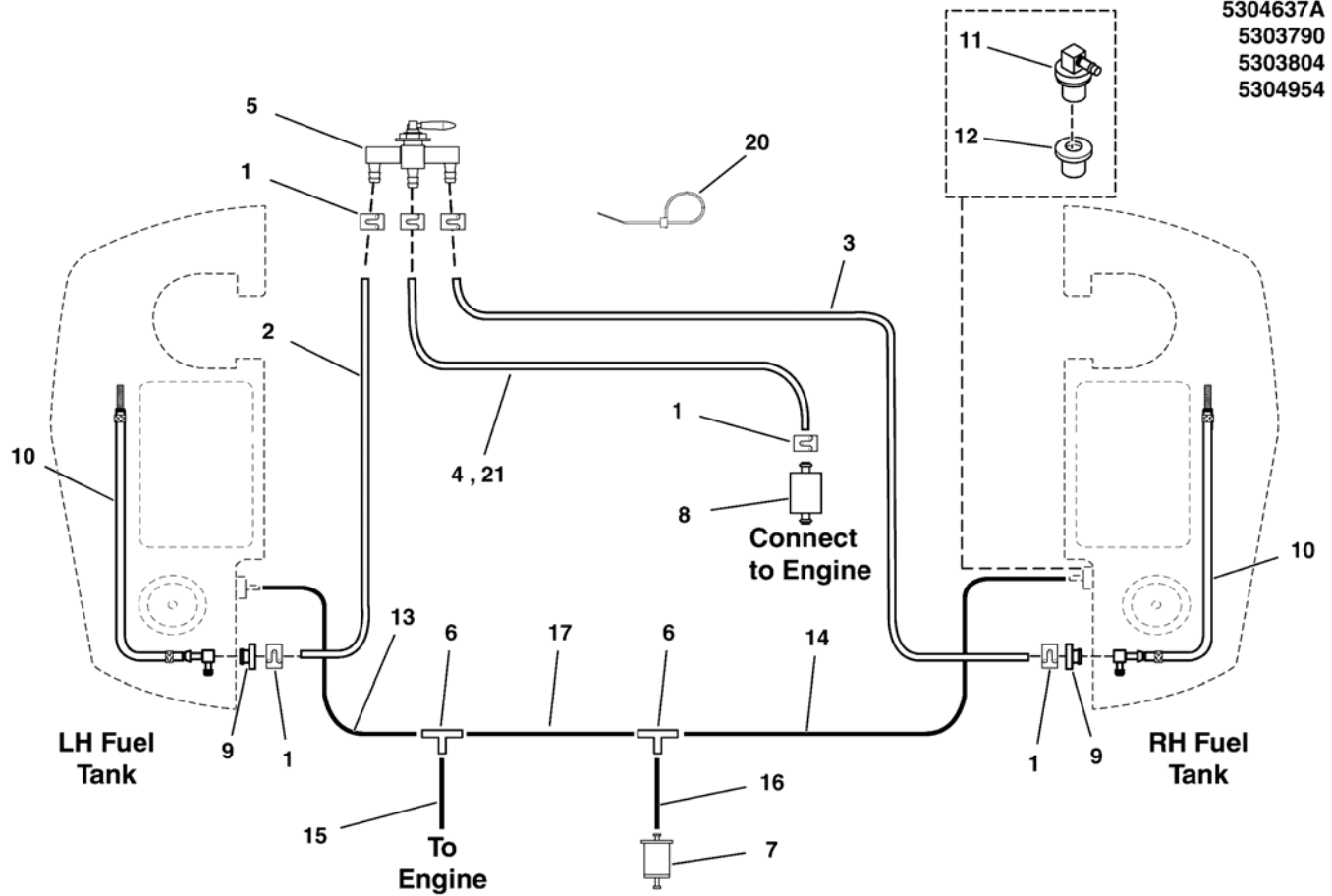
5901548

5901549

Fuel Supply Hose, Tank Replacement Parts, and Evap Group

NOTE: Unless noted otherwise, use the standard hardware torque specification chart.

5304637A
5303790
5303804
5304954



The above parts group applies to the following Mfg. Nos.:

5901548
5901549

Fuel Supply Hose, Tank Replacement Parts, and Evap Group

REF NO	PART NO.	QTY.	DESCRIPTION
1	5020835	6	CLAMP, HOSE, EXTERNAL, 1/2 - RED
2	5050831X24	1	HOSE, 1/4" FUEL, 24.00"
3	5050831X26	1	HOSE, 1/4" FUEL, 26.00
4	5050831X16	1	HOSE, 1/4" FUEL, 16.00" (Briggs & Stratton Models)
5	--	-	SEE FUEL TANK AND MOUNT GROUP
6	5103062	2	FITTING, 3/16" TEE, BARB TYPE, HDPE
7	794079	1	FILTER, FUEL
8	5021178X3	1	FUEL FILTER (SV)
9	1726400	2	BUSHING-FUEL TANK RED RUBBER (SV)
10	5101402	2	PICKUP TUBE ASM, FUEL TANK, 23" (SV)
11	7104638	2	REMOVE VENT ASSEMBLY, NO VALVE (SV)
12	209043	2	GROMMET (SV)
13	7700552X12	1	HOSE, VAPOR, 5MM ID, 12.00 LG
14	7700552X26	1	HOSE, VAPOR, 5MM ID, 26.00 LG
15	7700552X16P5	1	HOSE, VAPOR, 5MM ID, 16.50 LG (Kawasaki Models)
16	7700552X2	1	HOSE, VAPOR, 5MM ID, 2.00 LG
17	7700552X17P5	1	HOSE, VAPOR, 5MM ID, 17.50 LG (Kawasaki Models)
18	7700552X5	1	HOSE, VAPOR, 5MM ID, 5.00 LG (Briggs & Stratton Models)
19	7700552X22	1	HOSE, VAPOR, 5MM ID, 22.00 LG (Briggs & Stratton Models)
20	5021030	4	TIE, SELF-LOCKING, 6" (Qty: 3 - Briggs & Stratton Models)
21	5050831X5	1	HOSE, 1/4" FUEL, 5.00" (Kawasaki Models)

Not for
Reproduction

Footnotes

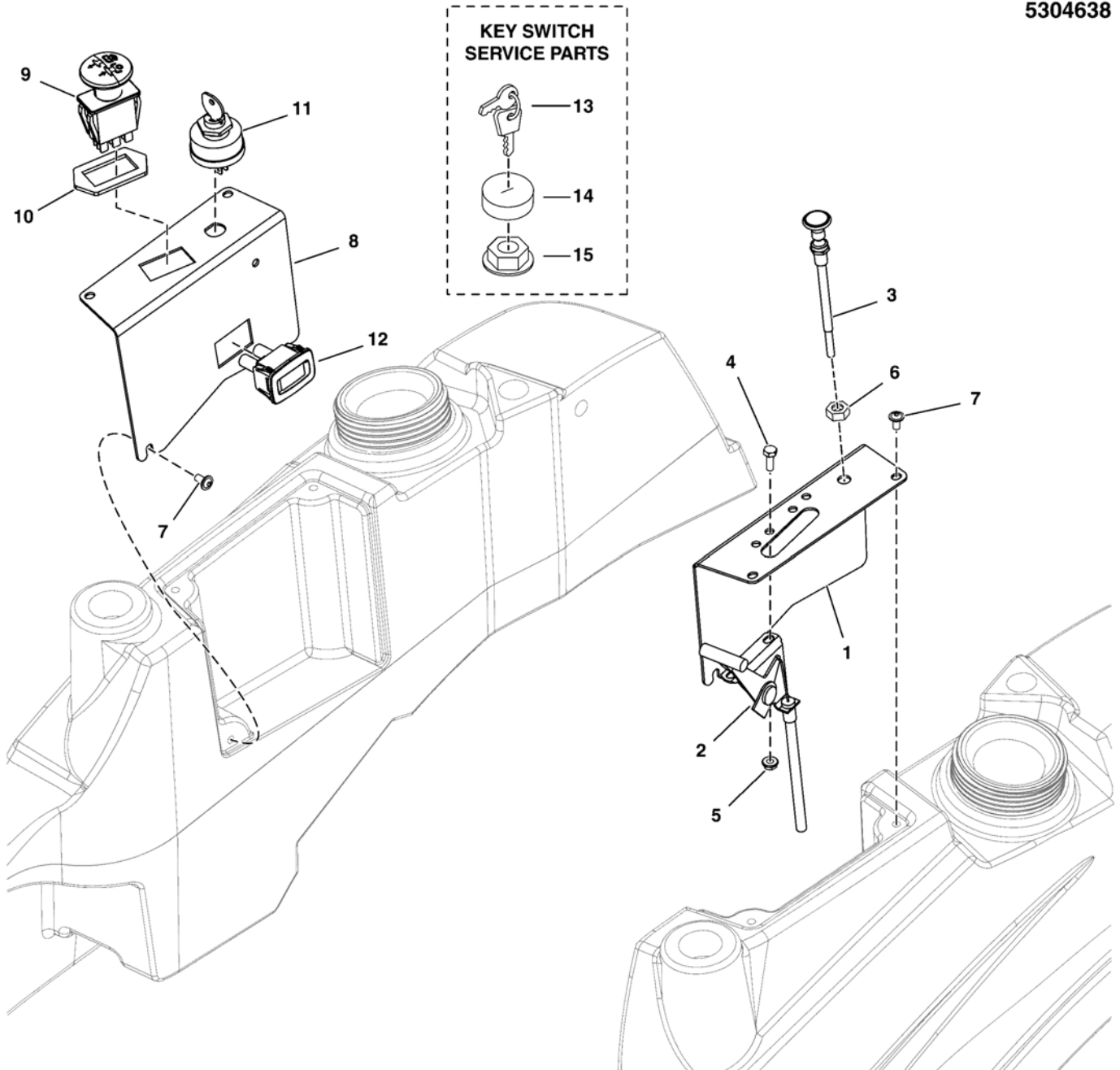
The above parts group applies to the following Mfg. Nos.:

5901548
5901549

Instrument Control Panel Group

NOTE: Unless noted otherwise,
use the standard hardware torque
specification chart.

5304638



The above parts group applies to the following Mfg. Nos.:

5901548

5901549

Instrument Control Panel Group

REF NO	PART NO.	QTY.	DESCRIPTION
1	5415256A	1	PLATE, CONTROL PANEL, LH, F60Z - BLK
2	5105187	1	CABLE, THROTTLE CONTROL, 51"
3	5047779	1	CABLE, CHOKE CONTROL, 51 (Z)
4	5025010X5	2	BOLT-1/4-20 X 5/8 GD5 CZ
5	5025391	2	NUT, 1/4-20 HEX NYLOCK FLANGE
6	5025309	1	NUT, 3/8-24 HEX JAM
7	5025299X4	6	SCREW, ALLEN HEAD 1/4-20X.500 ZINC PHOS
8	5415736A	1	CONTROL PANEL, RH, F60Z - BLK
9	1722887	1	SWITCH-PTO PUSH
10	5022222	1	RING, SWITCH RETAINER
11	5020927	1	SWITCH, IGNITION, 6 POST (Includes Ref # 13 - 15)
12	--	1	* HOUR METER, ASSEMBLY (5409263) * When replacing this hour meter, please call our service department at 1-800-933-6175 ext. 709
13	5022789	1	KEY, IGNITION, MOLDED SET (SV)
14	5022790	1	COVER (SV)
15	5022791	1	PLASTIC NUT (SV)

Not for
Reproduction

Footnotes

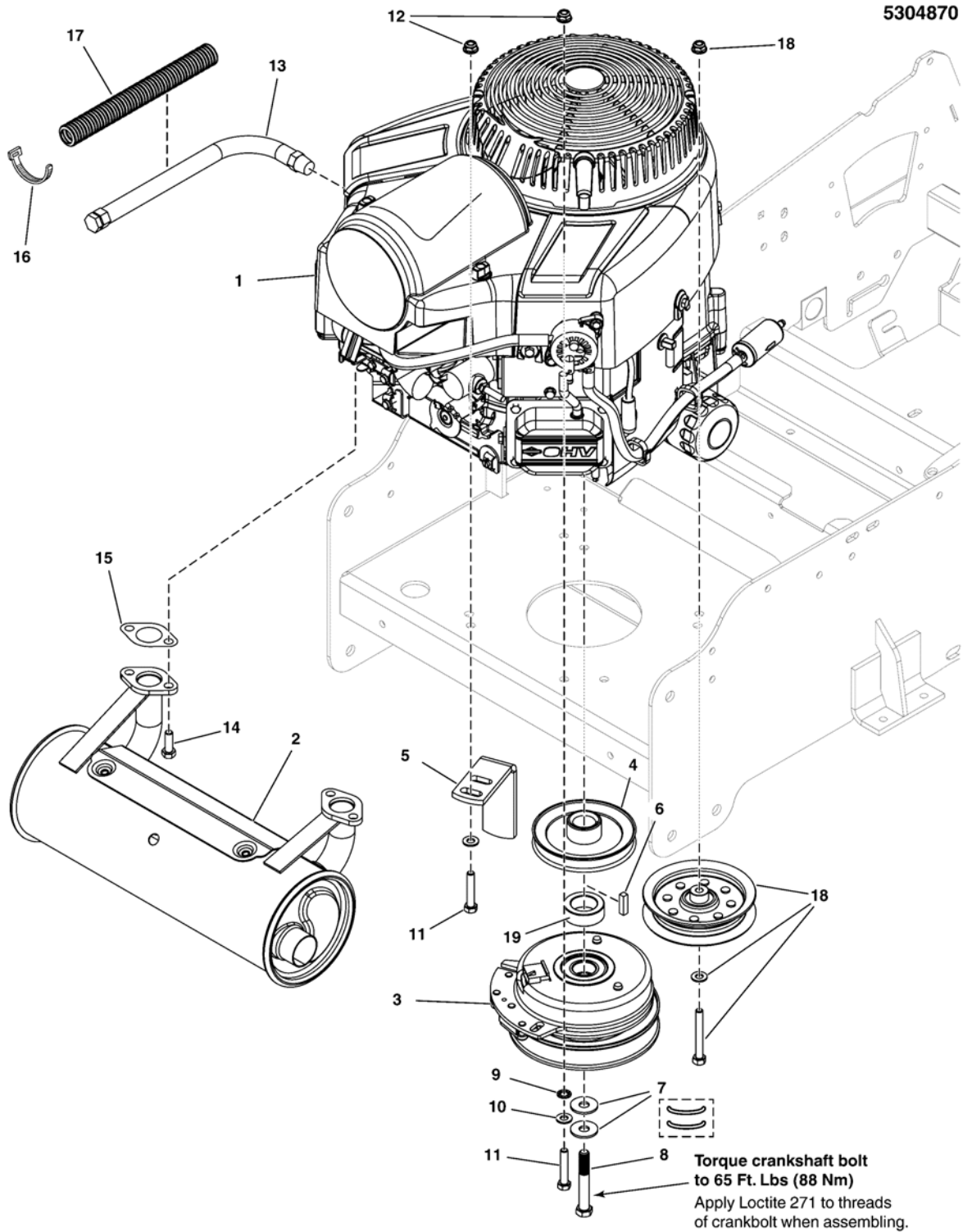
The above parts group applies to the following Mfg. Nos.:

5901548

5901549

Engine & PTO Group - Briggs & Stratton

NOTE: Unless noted otherwise, use the standard hardware torque specification chart.



The above parts group applies to the following Mfg. Nos.:
5901548

Engine & PTO Group - Briggs & Stratton

REF NO	PART NO.	QTY.	DESCRIPTION
1	--	1	ENGINE, 25HP B&S COMM TURF 1 X 3.16
2	593249	1	MUFFLER, RIGHT OUTLET ASSY
3	5105087	1	CLUTCH, WARNER, 125 FT LBS, 1-1/8" BORE
4	5101338	1	PULLEY, PUMP DRIVE, 4.857 OB X 1-1/8
5	5404967A	1	ANCHOR, CLUTCH - BLK
6	5050407X8	1	KEY, 1/4 SQ X 1
7	5025585	2	BELLEVILLE WASHER 1.1875 X .442 X .089
8	5102865	1	BOLT, CRANKSHAFT, 7/16-20X2-3/4, GD8
9	5025188	2	WASHER, 5/16 INT. TOOTH LOCK
10	5025155	3	WASHER, 5/16 SAE
11	5025025X14	3	BOLT, 5/16-24 X 1-3/4, GD8, PHOS
12	5025616	3	NUT, 5/16-24, TOP LOCK FLANGE, GD8 PHOS
13	5048681	1	HOSE, OIL DRAIN
14	94480	4	SCREW-HEX SEMS LOCK WSHR 5/16-18X0.875
15	273485	2	GASKET, EXHAUST
16	5021030	1	TIE, SELF-LOCKING, 6"
17	5050833X11	1	WIRE LOOM, 1/2 ID X 11 IN
18	--	--	SEE TRANSAXLE DRIVE GROUP
19	5048135	1	SPACER, 1.13 X 1.75 X .62

Not for
Reproduction

Footnotes

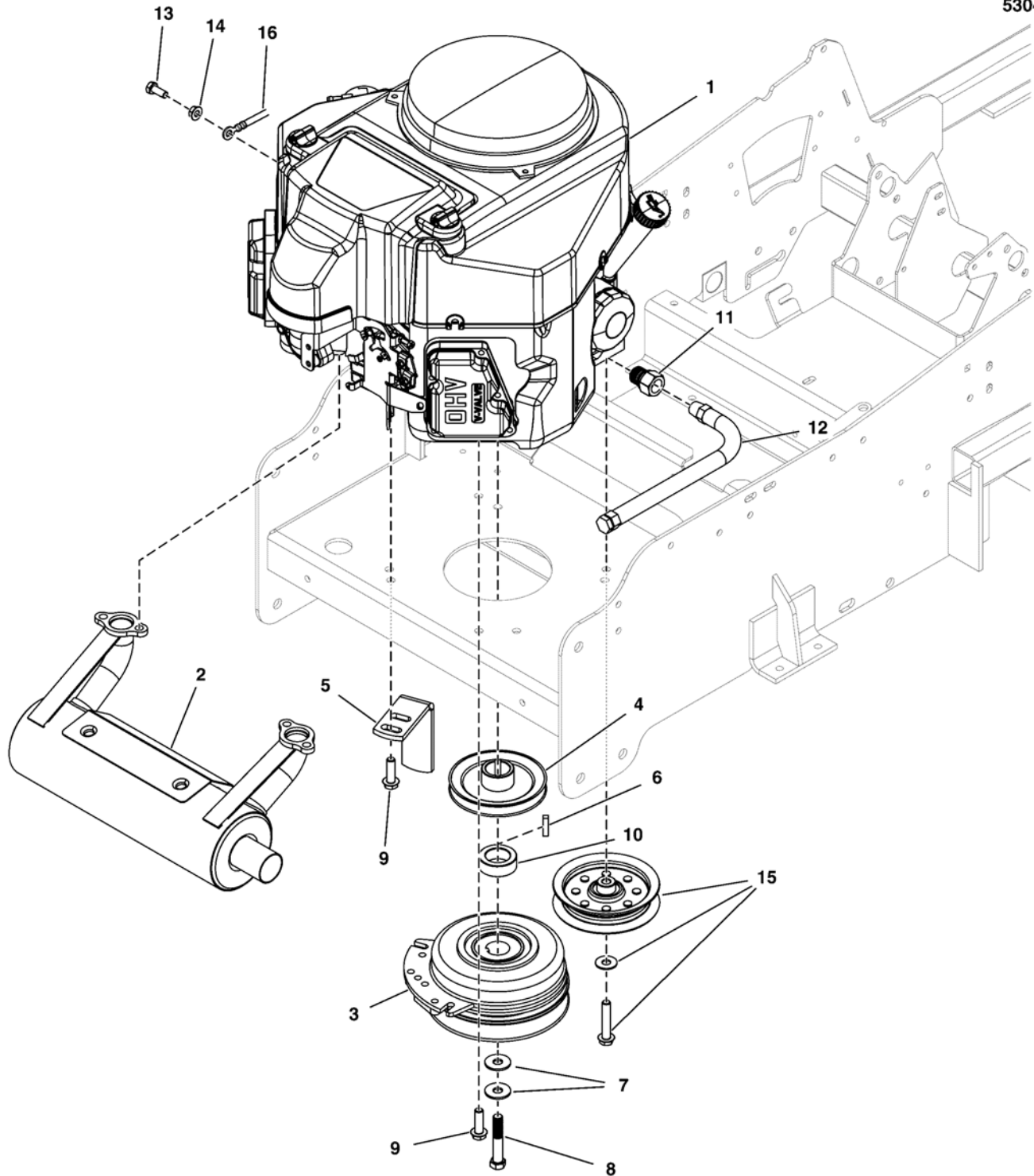
The above parts group applies to the following Mfg. Nos.:

5901548

Engine & PTO Group - Kawasaki

NOTE: Unless noted otherwise,
use the standard hardware torque
specification chart.

5304871



The above parts group applies to the following Mfg. Nos.:

5901549

Engine & PTO Group - Kawasaki

REF NO	PART NO.	QTY.	DESCRIPTION
1	--	1	ENGINE, 19HP, KAWASAKI, FX600V
2	5102109	1	MUFFLER, (16-20HP), KAWASAKI S50X
3	5105087	1	CLUTCH, WARNER, 125 FT LBS, 1-1/8" BORE
4	5101338	1	PULLEY, PUMP DRIVE, 4.857 OB X 1-1/8
5	5404967A	1	ANCHOR, CLUTCH - BLK
6	5050407X8	1	KEY, 1/4 SQ X 1
7	5025585	2	BELLEVILLE WASHER 1.1875 X .442 X .089
8	5102864	1	BOLT, CRANKSHAFT, 7/16-20X2-1/2, GD8
9	5025532	3	BOLT, 3/8-16 X 1-1/4, SF, PLT W/PATCH
10	5048135	1	SPACER, 1.13 X 1.75 X .62
11	5022234	1	ADAPTER-OIL DRAIN
12	5048681	1	HOSE, OIL DRAIN
13	5025249	1	BOLT, M8-1.25 X 20MM GD8.8
14	5025355	1	NUT, M8-1.25 SERR. FLANGE, CZ
15	--	--	SEE TRANSAXLE DRIVE GROUP
16	--	--	SEE ELECTRICAL GROUP

Not for
Reproduction

Footnotes

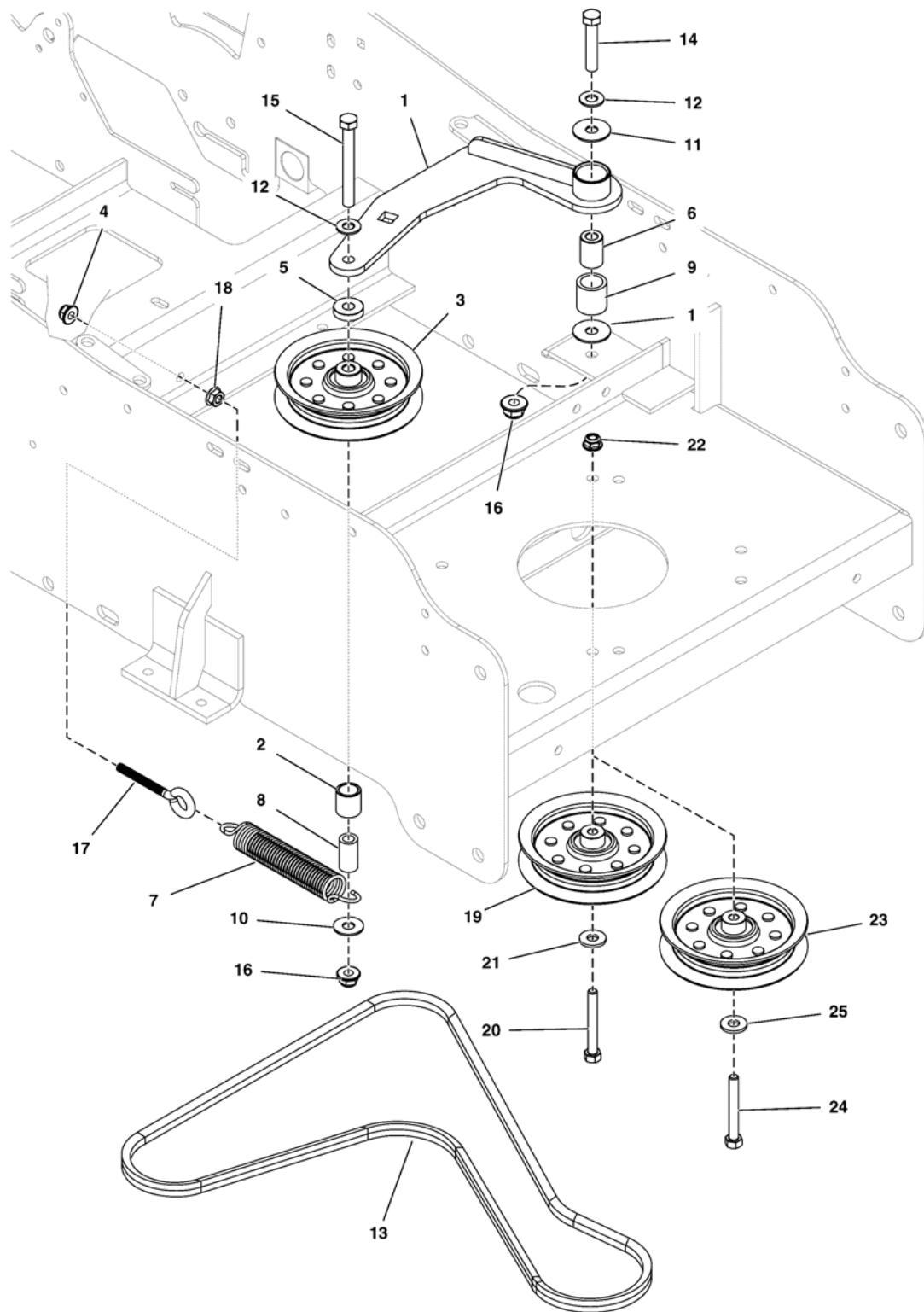
The above parts group applies to the following Mfg. Nos.:

5901549

Transaxle Drive Group

NOTE: Unless noted otherwise, use the standard hardware torque specification chart.

5304640
5304658



The above parts group applies to the following Mfg. Nos.:

5901548
5901549

Transaxle Drive Group

REF NO	PART NO.	QTY.	DESCRIPTION
1	5415852A	1	WELD, IDLER ARM, F60Z/S50XT - BLK
2	5102946	1	SPACER, .64 X .82 X .88, CZ
3	5101380	1	PULLEY-IDLER, 4.06OD, .375ID, .75W STL
4	5025392	1	NUT, 5/16-18 HEX NYLOCK FLANGE
5	5044960	1	SPACER, .39 X 1.00 X .25, PM, CZ
6	5042658	1	SPACER, .39 X .75 X 1.06
7	1715435	1	SPRING, EXTENSION, 1.00
8	1674669	1	SPACER-0.39 IDX0.625ODX1.15 LG CASE HARD
9	5020876B	1	BUSHING, BRASS, 3/4 X 1 X 1
10	5025401	1	WASHER, 3/8 USS
11	5025165	2	WASHER-3/8 FENDER
12	5025156	2	WASHER, 3/8" SAE
13	5022173	1	BELT, A-SEC, 66.266EL, ARAMID, WRPD
14	5025013X16	1	BOLT, 3/8-16 X 2 GD5 CZ
15	5025013X32	1	BOLT, 3/8-16 X 4 GD5 CZ
16	5025394	2	NUT, 3/8-16 HEX NYLOCK FLANGE
17	5025141X26	1	EYE BOLT, 5/16-18 X3.5, 2.13THRD, .55EYE, CZ
18	5025127	1	NUT, 5/16-18 HEX SERRATED FLANGE (SMALL)
19	5101379	1	PULLEY-IDLER, 4.06OD, .315ID, .75W STL (Models w/ B&S Engines)
20	5025011X20	1	BOLT, 5/16-18 X 2-1/2 GD5 CZ (Models w/ B&S Engines)
21	5025337	1	WASHER, 5/16 USS (Models w/ B&S Engines)
22	5025392	1	NUT, 5/16-18 HEX NYLOCK FLANGE (Models w/ B&S Engines)
23	5101380	1	PULLEY-IDLER, 4.06OD, .375ID, .75W STL (Models w/ Kawasaki Engines)
24	5025544	1	BOLT, 3/8-16 X 2, SF, PLT W/PATCH (Models w/ Kawasaki Engines)
25	5025401	1	WASHER, 3/8 USS (Models w/ Kawasaki Engines)

Footnotes

The above parts group applies to the following Mfg. Nos.:

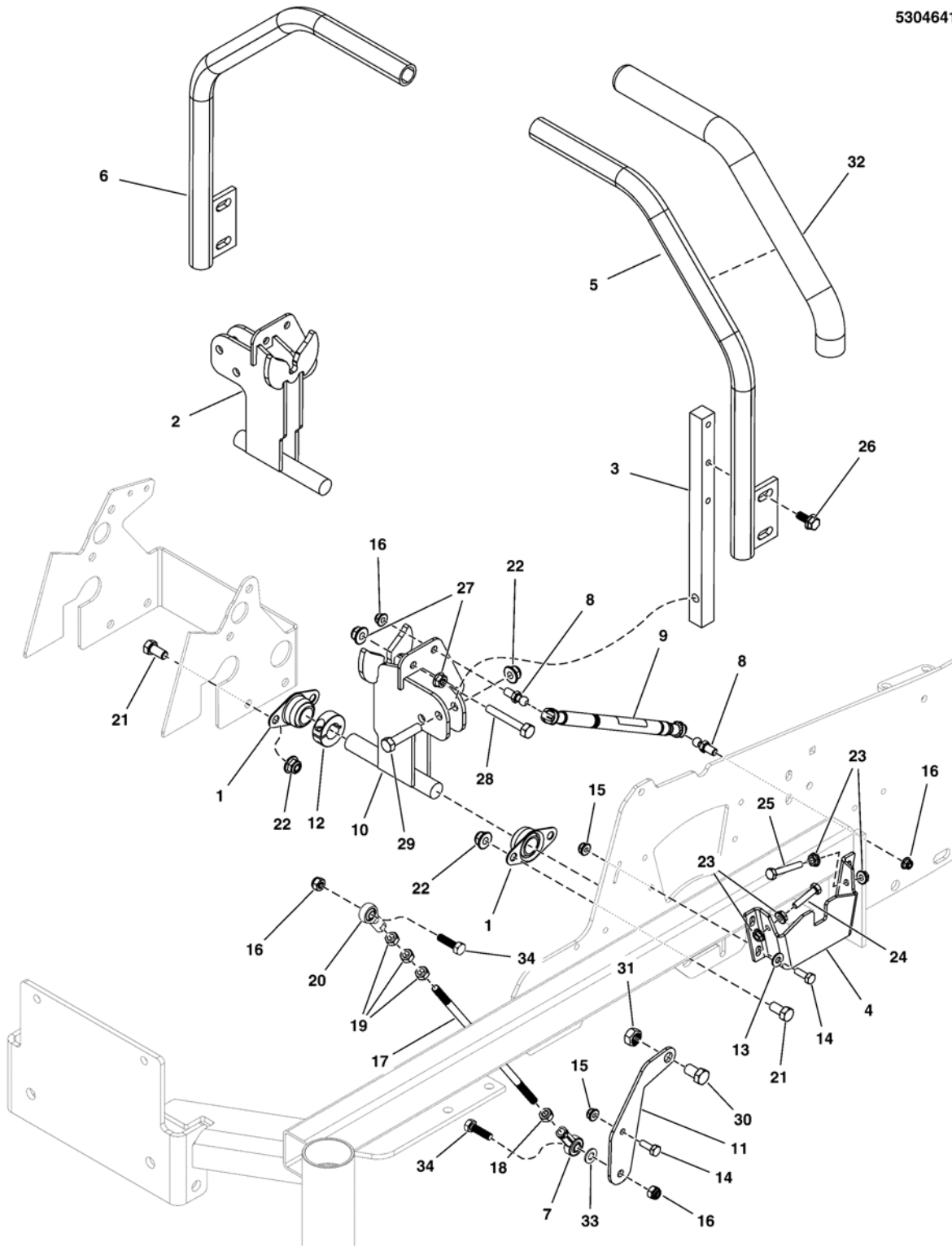
5901548

5901549

Motion Control Group

NOTE: Unless noted otherwise,
use the standard hardware torque
specification chart.

5304641



The above parts group applies to the following Mfg. Nos.:

5901548

5901549

Motion Control Group

REF NO	PART NO.	QTY.	DESCRIPTION
1	5021098	4	BEARING, 3/4" FLANGED, BRONZE
2	5415526A	1	WELD, MOTION CONTROL, RH - BLK
3	5103106A	2	MOUNT, CONTROL ARM - BLK
4	5415633A	2	PLATE, NEUTRAL BOX, F60Z - BLK
5	5414429A	1	WELD,HANDLE MOTION CNTRL,17.0,1.0,LH,BLK
6	5414430A	1	WELD,HANDLE MOTION CNTRL,17.0,1.0,RH,BLK
7	5104579	2	BALL JOINT 5/16-24 LH FEMALE STAMPED STL
8	5100941	4	BALL STUD, 5/16 X .50,# PC-477-2)
9	5100940	2	DAMPENER, CONTROL,#(P6709/P3610)
10	5415525A	1	WELD MOTION CONTROL, LH - BLK
11	5402910A	2	PLATE, CONTROL LINK, TRANSAXLE - BLK
12	5010114	2	COLLAR, 3/4 SPLIT
13	5025154	8	WASHER, 1/4 SAE
14	5025010X6	10	BOLT, 1/4-20 X 3/4 GD5 CZ
15	5025391	10	NUT, 1/4-20 HEX NYLOCK FLANGE
16	5025045	4	NUT, 5/16-24 HEX NYLON LOCK
17	5046420	2	ROD, HYDRO LINKAGE, CZ
18	5023212	2	NUT, 5/16-24 HEX, LH
19	5025033	6	NUT, 5/16-24 HEX
20	5104578	2	BALL JOINT 5/16-24 RH FEMALE STAMPED STL
21	5025013X6	8	BOLT, 3/8-16 X 3/4 GD5 CZ
22	5025394	12	NUT, 3/8-16 HEX NYLOCK FLANGE
23	5025126	8	NUT, 1/4-20 HEX SERR. FLANGE
24	5025068X10	2	BOLT, 1/4-20 X 1-1/4 GD5 TFL
25	5025068X14	2	HEX BOLT, 1/4-20 X 1-3/4 GD 5, TFL
26	80003531	4	SCREW, 5/16-18x0.750, GR5, WHIZ-LOCK, ZC
27	5025127	6	NUT, 5/16-18 HEX SERRATED FLANGE (SMALL)
28	5025055X18	2	BOLT, 5/16-18 X 2-1/4 GD5 TFL, ZN
29	5025013X14	4	BOLT, 3/8-16 X 1-3/4 GD5 CZ
30	5025015X6	2	BOLT, 7/16-14 X 3/4, GD 5 CZ
31	5025044	2	NUT, 7/16-14 HEX TOP LOCK
32	5104722	2	GRIP, FOAM, 1" ID, 16" LONG
33	5025156	2	WASHER, 3/8 SAE
34	5025011X9	4	BOLT, 5/16-18 X 1-1/8 GD5

Footnotes

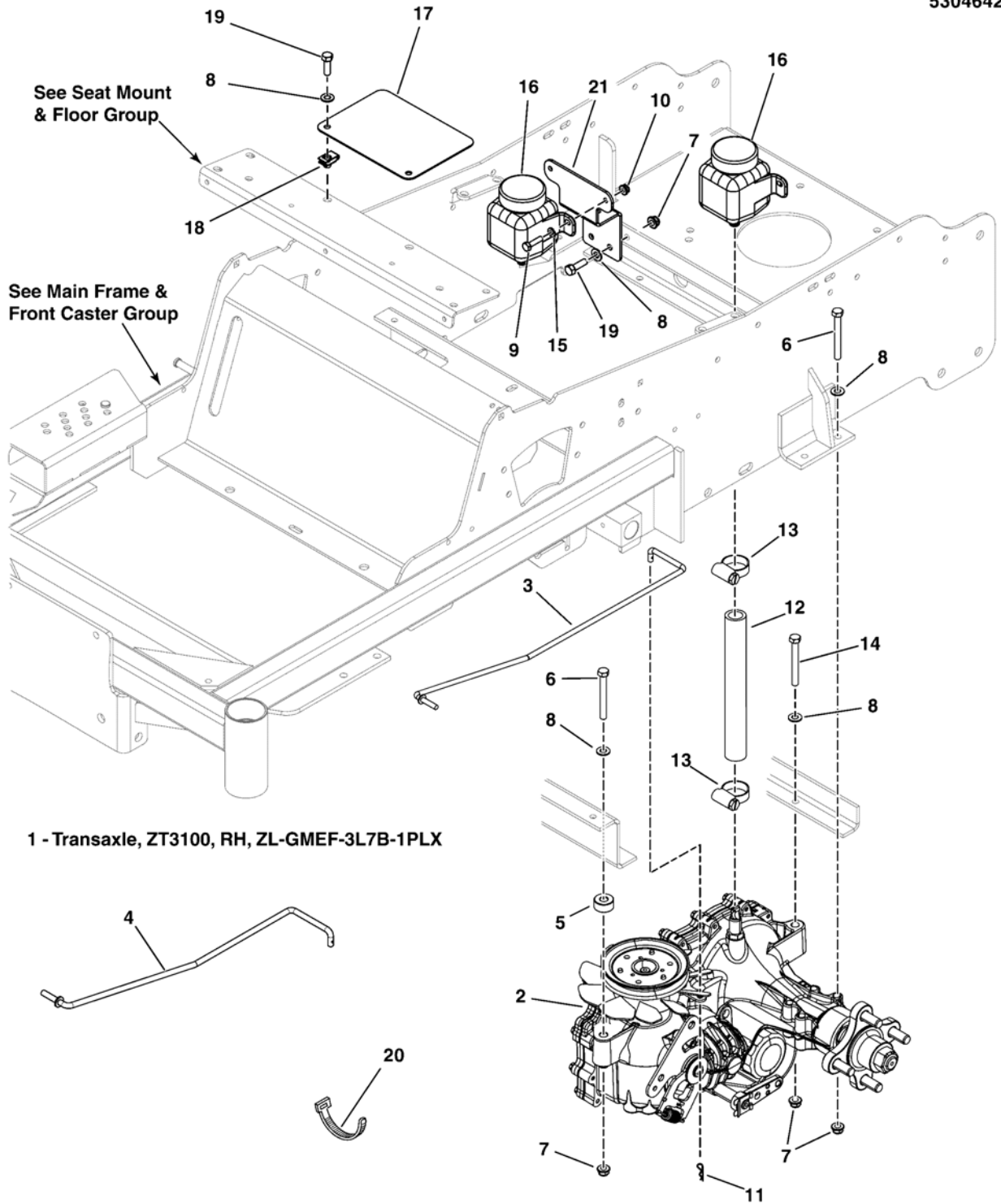
The above parts group applies to the following Mfg. Nos.:

5901548
5901549

Hydraulic Group

NOTE: Unless noted otherwise, use the standard hardware torque specification chart.

5304642



The above parts group applies to the following Mfg. Nos.:

5901548

5901549

Hydraulic Group

REF NO	PART NO.	QTY.	DESCRIPTION
1	5101024	1	TRANSAXLE, ZT3100, RH, ZL-GMEF-3L7B-1PLX (Not illustrated)
2	5101025	1	TRANSAXLE, ZT3100, LH, ZL-KMEF-3L7C-1PLX
3	5101138	1	ROD, DUMP VALVE, LH
4	5101139	1	ROD, DUMP VALVE, RH
5	5046860	2	SPACER, .39 X 1.00 X .50, PM, CZ
6	5025011X22	6	BOLT, 5/16-18 X 2-3/4 GD5 CZ
7	5025392	12	NUT, 5/16-18 HEX NYLOCK FLANGE
8	5025155	12	WASHER, 5/16 SAE
9	5025010X6	4	BOLT, 1/4-20 X 3/4 GD5 CZ
10	5025391	4	NUT, 1/4-20 HEX NYLOCK FLANGE
11	5025211	2	PIN, HAIR, .0585 X 1-1/8, 1/4 EYE, CZ
12	5050857X4	2	HOSE, 1/2" PUSH-ON 4.00"
13	5025474	4	CLAMP, HOSE, .75 FREE DIA.
14	5025011X18	2	BOLT, 5/16-18 X 2-1/4 GD5 CZ
15	5025154	4	WASHER, 1/4 SAE
16	5100473	2	HYDRO RES. #71328, 350 ml (Includes item #22)
17	5407997A	1	PLATE, BELT GUARD - BLK
18	5022308	2	BODY CLIP, 5/16-18-7GA MATERIAL
19	5025011X8	6	BOLT, 5/16-18 X 1 GD5 CZ
20	5021029	2	TIE, SELF-LOCKING, 12"
21	5415860A	2	PLATE, HYDRO BOTTLE MOUNT - BLK
22	5100778X1	2	RESERVOIR CAP (SV)

Not for
Reproduction

Footnotes

The above parts group applies to the following Mfg. Nos.:

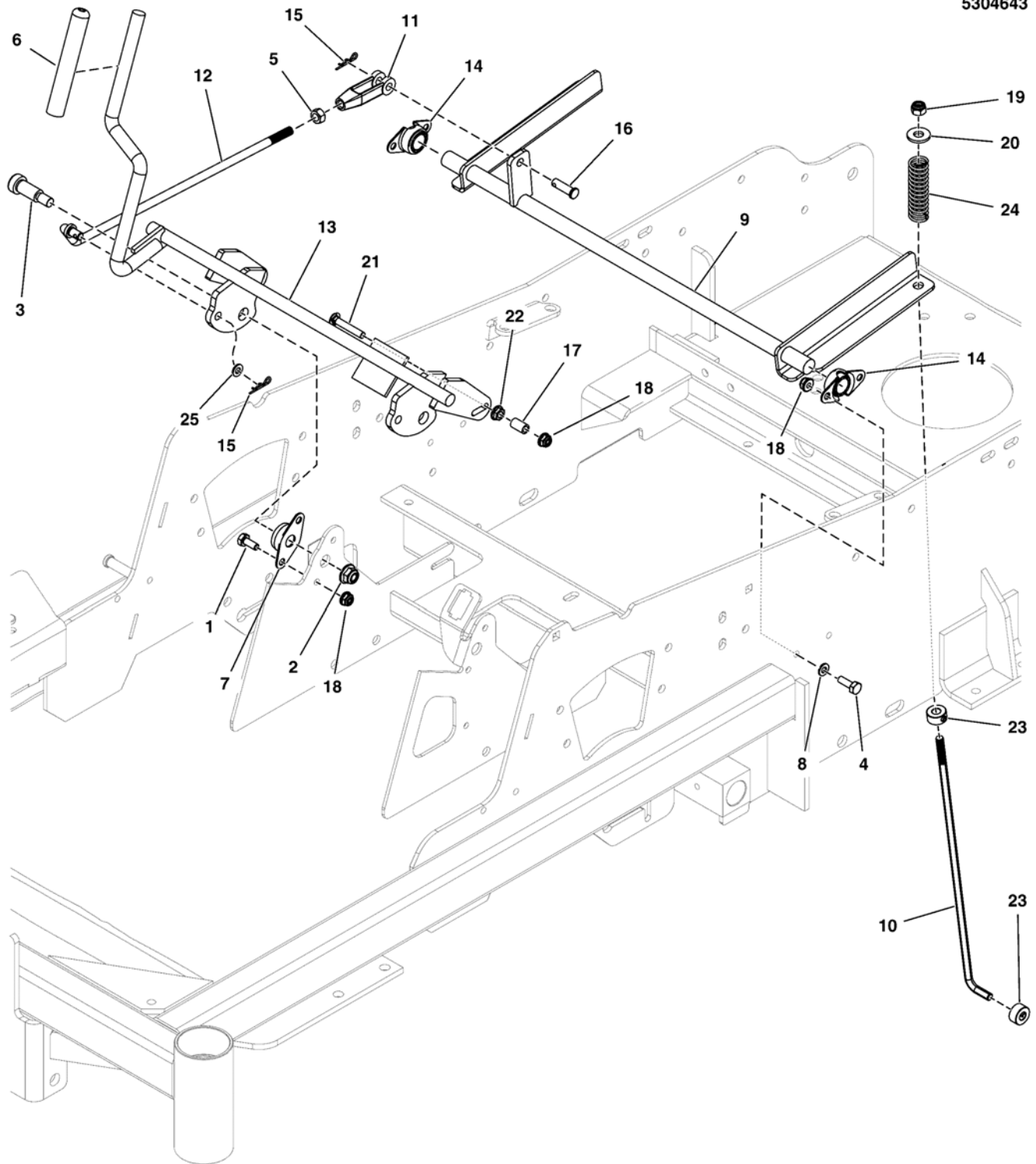
5901548

5901549

Parking Brake Group

NOTE: Unless noted otherwise,
use the standard hardware torque
specification chart.

5304643



The above parts group applies to the following Mfg. Nos.:

5901548

5901549

Parking Brake Group

REF NO	PART NO.	QTY.	DESCRIPTION
1	5025010X5	4	BOLT-1/4-20 X 5/8 GD5 CZ
2	5025394	2	NUT, 3/8-16 HEX NYLOCK FLANGE
3	5025223	2	BOLT, 3/8-16 X 1, 1/2 SHOULDER
4	5025010X6	4	BOLT, 1/4-20 X 3/4 GD5 CZ
5	5025033	1	NUT, 5/16-24 HEX
6	5021880	1	GRIP, FOAM, .475 X 4.35 X .095
7	5101123	2	BEARING, 1/2 FLANGED, PLASTIC BALL
8	5025154	4	WASHER, 1/4 SAE
9	5415462A	1	WELD, BRAKE SHAFT - BLK
10	5101058	2	ROD, BRAKE CTRL, LOWER - CONZ
11	5023323	1	CLEVIS, 5/16-24, STEEL, CLEAR ZINC
12	5104641	1	ROD, PARKING BRAKE, W35, UPPER
13	5415410A	1	WELD, BRAKE LEVER - BLK
14	5104270	2	BEARING, 5/8" FLANGED, PLASTIC BALL
15	5025211	2	PIN, HAIR, .0585 X 1-1/8, 1/4 EYE, CZ
16	5025213X8	1	PIN, CLEVIS, 5/16 X 1, PLATED
17	5041483	2	SPACER, .25 X .38 X .63, CZ
18	5025391	10	NUT, 1/4-20 HEX NYLOCK FLANGE
19	5025045	2	NUT, 5/16-24 HEX NYLON LOCK
20	5025337	2	WASHER, 5/16 USS
21	80003564	2	BOLT, 1/4-20 X 1.500, GR5, SQ, ZINC/CLEA
22	5025126	2	NUT, 1/4-20 HEX SERR. FLANGE
23	5020047	4	COLLAR, 5/16 SET
24	5021102	2	SPRING-COMP, .594ID X 2.68LG X .080WR
25	5025155	4	WASHER, 5/16 SAE

Footnotes

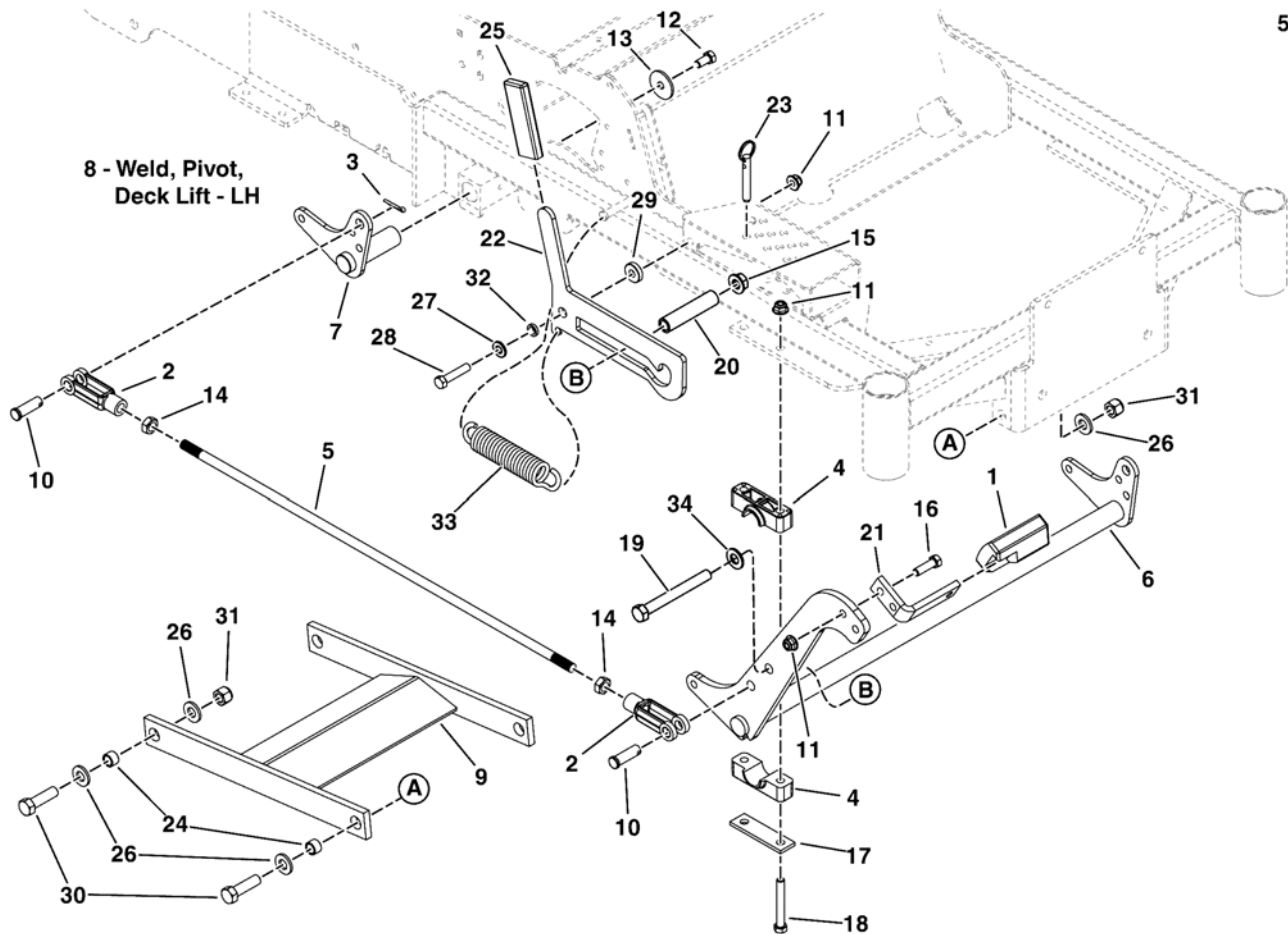
The above parts group applies to the following Mfg. Nos.:

5901548
5901549

Deck Lift Group

NOTE: Unless noted otherwise,
use the standard hardware torque
specification chart.

5304644



The above parts group applies to the following Mfg. Nos.:

5901548

5901549

Deck Lift Group

REF NO	PART NO.	QTY.	DESCRIPTION
1	5104262	1	PEDAL, RUBBER
2	5023174	4	CLEVIS, 1/2-20, STEEL, CLEAR ZINC
3	5025203X6	4	PIN, COTTER, 1/8 X 3/4
4	5100634	4	PIVOT BLOCK, PLASTIC
5	5101117	2	ROD, DECK LIFT, SNAPPER PRO
6	5407892B	1	WELD, FRONT DECK PIVOT - RED
7	5402956A	1	WELD, PIVOT, DECK LIFT, RH - BLK
8	5402957A	1	WELD, PIVOT, DECK LIFT, LH - BLK
9	5415168A	1	WELD, PULLER BAR - BLK
10	5025328X12	4	PIN, CLEVIS, 1/2 X 1-1/2, CL/ZC
11	5025394	7	NUT, 3/8-16 HEX NYLOCK FLANGE
12	5025443	2	BOLT, 3/8-16 X 3/4, PLT W/PATCH
13	5100548	2	WASHER, .390 X 1.50 X .109, CZ
14	5025089	4	NUT, 1/2-20 HEX JAM
15	5025056	1	NUT, 1/2-13 HEX NYLON LOCK
16	5025013X10	2	BOLT, 3/8-16 X 1-1/4 GD5 CZ
17	5403925A	2	PLATE, PIVOT BLOCK SUPPORT - BLK
18	5025013X22	4	BOLT, 3/8-16 X 2-3/4 GD5 CZ
19	5025017X36	1	BOLT, 1/2-13 X 4-1/2 GD5 CZ
20	5102545	1	SPACER, .53 X .73 X 3.38, CZ
21	5061569A	1	PEDAL, FOOT - BLK
22	5406623A	1	PLATE, DECK TRANSPORT LEVER - BLK
23	5103021	1	HITCH PIN, 3/8 X 2-1/2, COTTERLESS, CZ
24	5020870	4	INSERT, BEARING
25	5025510	1	GRIP, FOAM, 1/4 X 1 X 4.1
26	5025440	8	WASHER, 1/2 GD9 CZ
27	5025293	1	WASHER, 3/8 GD.9 FLAT
28	5025013X14	1	BOLT, 3/8-16 X 1-3/4 GD5 CZ
29	5044960	1	SPACER, .39 X 1.00 X .25, PM, CZ
30	5025018X14	4	BOLT, 1/2-20 X 1-3/4 GD8 CZ
31	5025098	4	NUT, 1/2-20 HEX NYLON LOCK
32	5041930	1	SPACER, .38 X .50 X .27, CZ
33	5102692	1	SPRING, EXTENTION, .50 OD X 4.12 FL
34	5025158	1	WASHER, 1/2 SAE

Footnotes

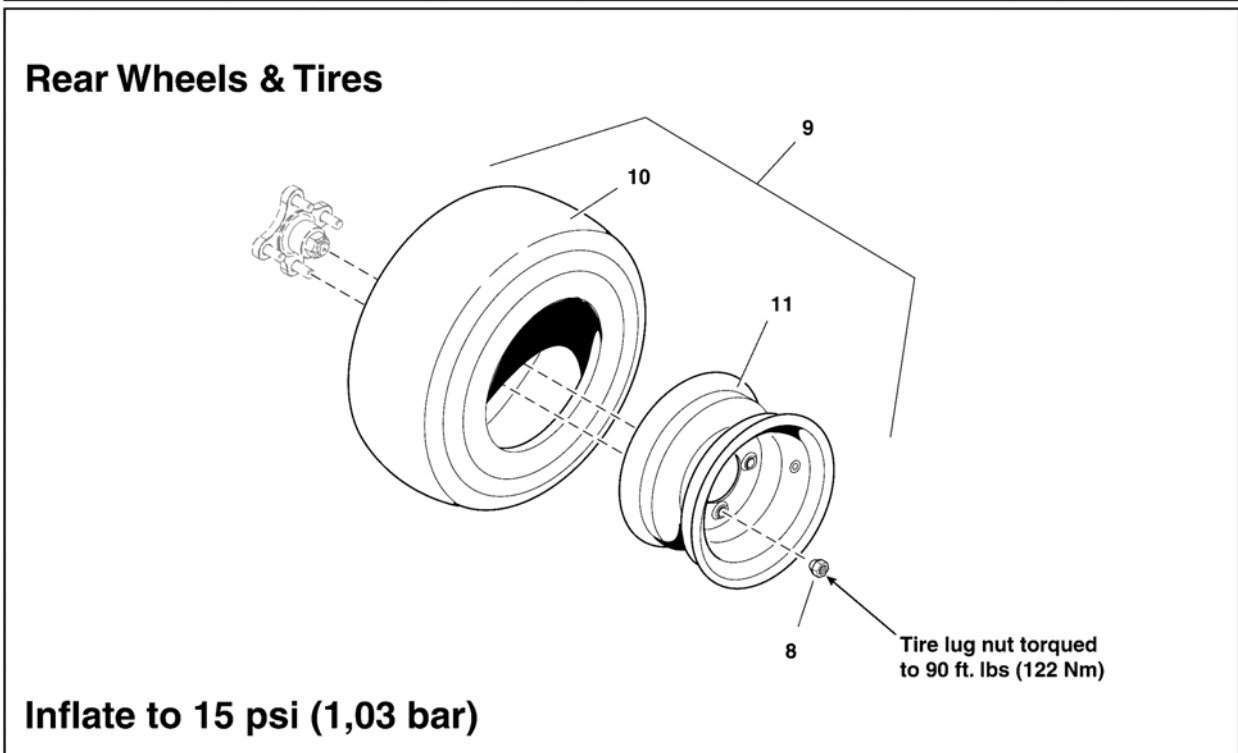
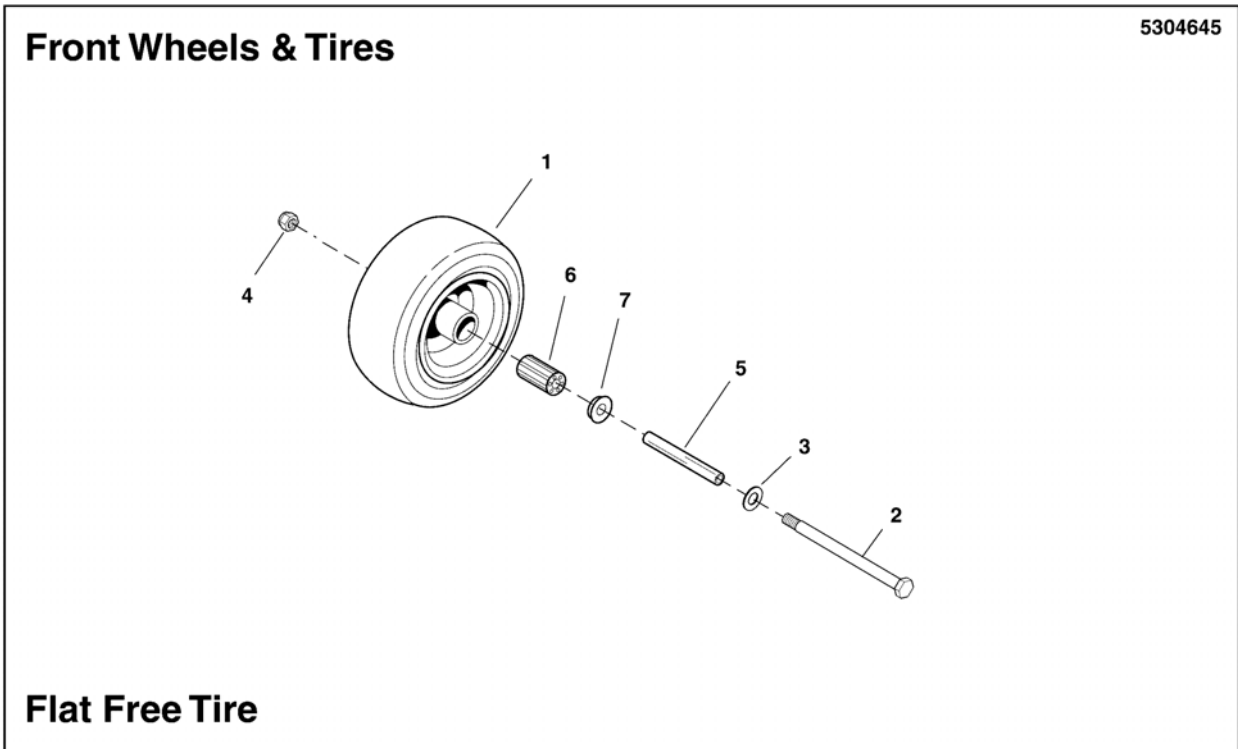
The above parts group applies to the following Mfg. Nos.:

5901548

5901549

Wheel & Tire Group

NOTE: Unless noted otherwise,
use the standard hardware torque
specification chart.



The above parts group applies to the following Mfg. Nos.:

5901548

5901549

Wheel & Tire Group

REF NO	PART NO.	QTY.	DESCRIPTION
1	5100715	2	TIRE ASSM, 11 X 4 - 5, FF / CB
2	5025017X56	2	BOLT, 1/2-13 X 7 GD5 CZ
3	5025158	2	WASHER, 1/2 SAE
4	5025396	2	NUT, 1/2-13 HEX NYLOCK FLANGE
5	5045996	2	CASTER AXLE DDSH
6	5101418X1	2	BEARING, ROLLER (SV)
7	5021043	4	BEARING, RETAINER (SV)
8	5020601	8	NUT, 1/2-20, FOR WHEEL BOLT SILVER
9	5101068	2	TIRE ASSM, 20 X 7 - 10, TURF, 4 BOLT
10	5101068X1	2	TIRE, 20 X 7 -10 NHS, TURF MASTER
11	5101068X2	2	WHEEL, 10 X 6.00 4/4 SOLID, F237

Not for
Reproduction

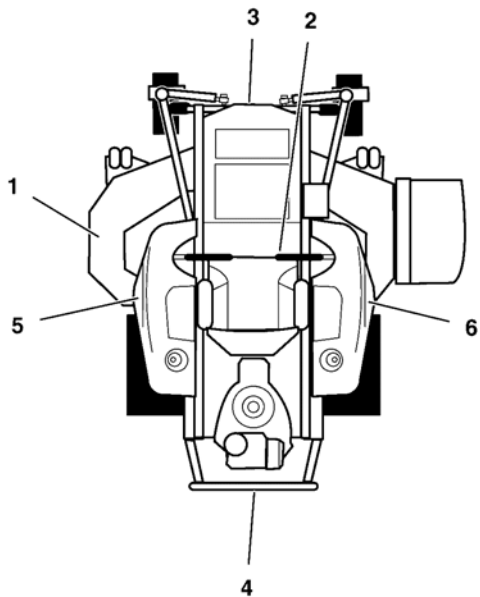
Footnotes

The above parts group applies to the following Mfg. Nos.:

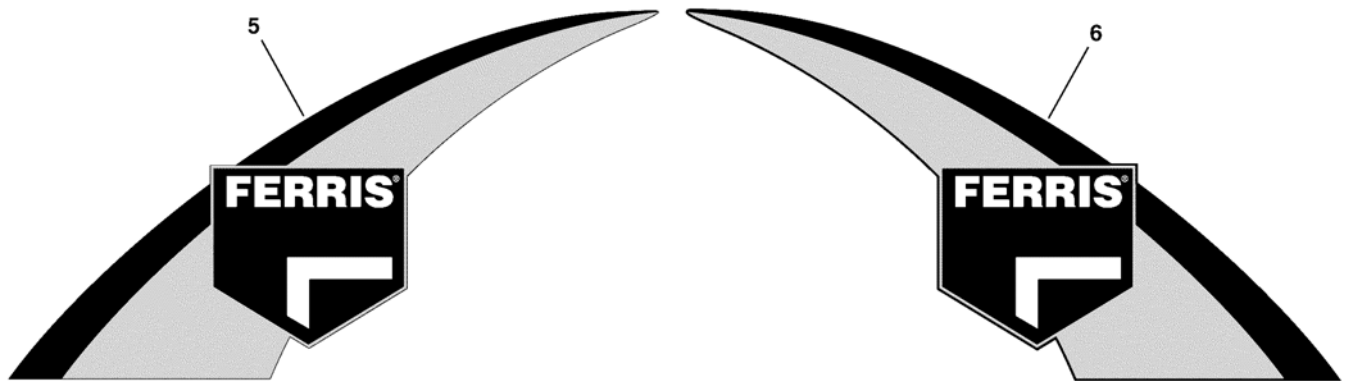
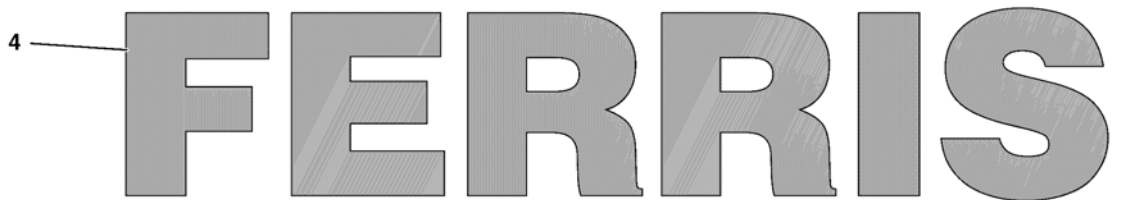
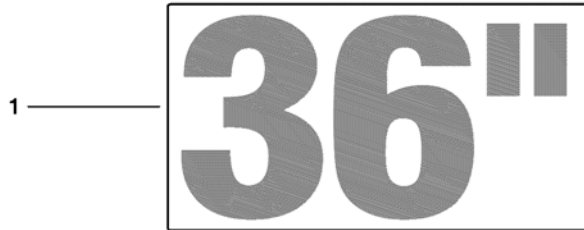
5901548
5901549

Decal Group - Brand & Model

NOTE: Unless noted otherwise,
use the standard hardware torque
specification chart.



5304646



The above parts group applies to the following Mfg. Nos.:

5901548

5901549

Decal Group - Brand & Model

REF NO	PART NO.	QTY.	DESCRIPTION
1	5104724	1	DECAL, FERRIS LOGO, MEDIUM
2	5105075	1	DECAL, MODEL, F60Z
3	5101322	1	DECAL, 36
4	5103799	1	DECAL, FERRIS, 2.23" X 11.39"
5	5104753	1	DECAL, TANK, SML, LH, FERRIS
6	5104754	1	DECAL, TANK, SML, RH, FERRIS

Not for
Reproduction

Footnotes

The above parts group applies to the following Mfg. Nos.:

5901548
5901549

Decal Group - Safety & Operation

NOTE: Unless noted otherwise, use the standard hardware torque specification chart.

5304648
5304876
5304875

1 - Large safety decal with multiple sections:

- WARNING**
 - Avoid serious injury or death
 - Read operator's manual before using this product.
 - Do NOT operate this machine unless you are trained.
 - Know the location and function of all controls.
 - Keep safety devices (guards, shields, switches, etc.) in place and working.
 - Remove objects that could be thrown by the blade.
 - Be sure blades and engine are stopped before placing hands or feet near blades.
 - When leaving machine, shut off, remove key and set parking brake.
 - Fire Hazard
 - Gasoline is flammable. Debris is combustible.
 - Allow engine to cool for at least 3 minutes before refueling.
 - Keep unit clean of debris.
 - This equipment may create sparks that can start fires around dry vegetation. A spark arrester may be required. Contact local fire agencies for regulations relating to fire prevention requirements.
- DANGER**
 - Amputation hazard
 - Rotating blades cut off arms and legs.
 - Stop the mower when children or others are near.
 - Do not carry riders (especially children) even with the blades off. They may fall off or return for another ride when you are not expecting it.
 - Lock down, behind and to the side before changing directions.
 - Loss of control and roll-over hazard
 - Operating on slopes can be hazardous and cause loss of control and roll-overs.
 - Avoid sudden turns or rapid speed changes.
 - Reduce speed and use extreme caution on slopes.
 - Go across slopes, NOT up and down.
 - Do not operate on slopes over 15 degrees.
 - If machine slips forward motion on a slope, stop the blades and drive slowly off the slope.
 - Water, retaining walls and drop-off hazards
 - Wheels dropping over edges may result in serious injury, death or drowning.
 - Do NOT operate near water retaining walls or drop-offs.
 - Give yourself a minimum of feet-mower-width-of clearance around these hazards.
 - Wet or soft slope hazard
 - Wet or soft slopes can cause sliding and loss of control.
 - Do NOT operate on slopes when grass is wet.
 - Do NOT operate on slopes when soil is soft (such as after heavy rains).

2 - Amputation and Pinch Point Hazard

3 - Amputation and thrown objects hazard

4 - Manual availability notice

5 - Ignition System (Gasoline Models) notice

6 - Fuel tank decal

7 - Blade guard decal

8 - Blade decal

9 - Safety diagram decal

10 - Deck dimensions decal

11 - Belts & Blades table

The above parts group applies to the following Mfg. Nos.:

5901548
5901549

Decal Group - Safety & Operation

REF NO	PART NO.	QTY.	DESCRIPTION
1	5103595	1	DECAL, MAIN SAFETY
2	5103184	1	DECAL, WARNING, HAND IN BELT, ENG ONLY (Located on plate between hydraulic oil tanks)
3	7101665	2	DECAL, DANGER DO NOT OPERATE W/O DEFLECT
4	5104269	1	DECAL, SPANISH MANUAL, IGES, C-TICK
5	5100957	1	DECAL, HYDRAULIC OIL, 20W50 (Located on frame cross bar)
6	5100342	1	DECAL, FUEL VALVE
7	5100280	1	DECAL, THROTTLE CONTROL
8	5048970	1	DECAL, IGNITION SWITCH
9	5104268	2	DECAL, TRANSAXLE RELEASE, WB
10	5101315	1	DECAL, CUT HEIGHT, S50X
11	5105152	1	DECAL, BELT & BLADE, F60Z

Not for
Reproduction

Footnotes

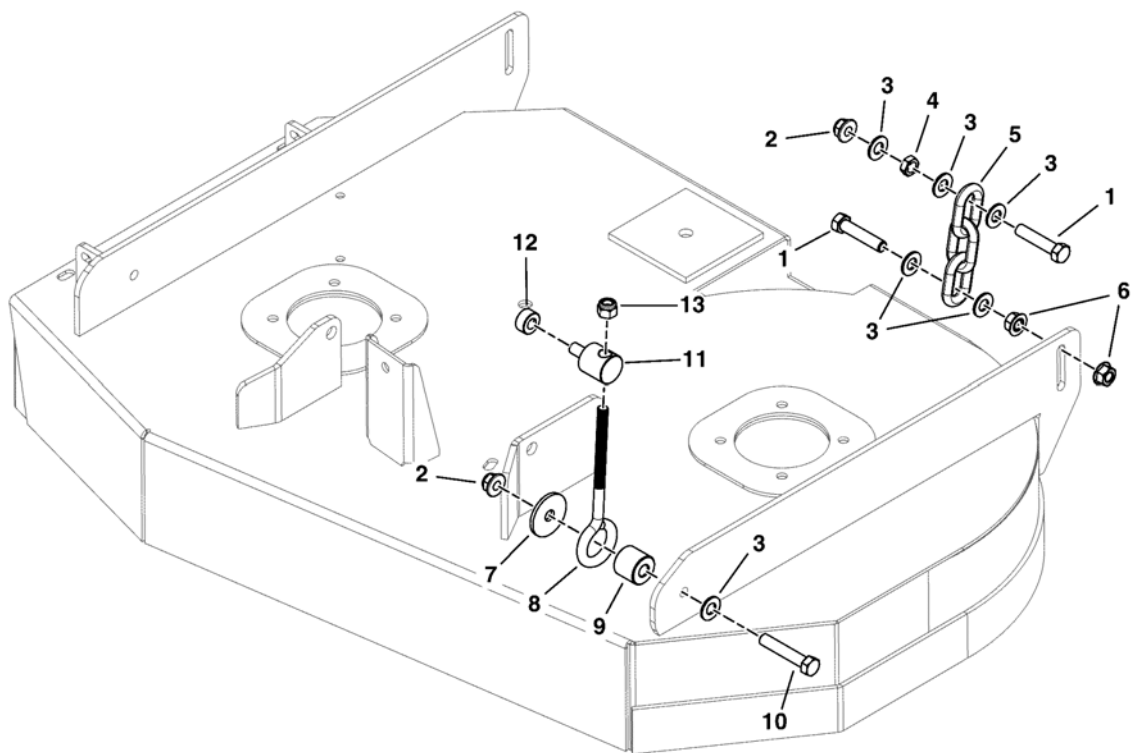
The above parts group applies to the following Mfg. Nos.:

5901548
5901549

36" Mower Deck Group - Hanger Chains

NOTE: Unless noted otherwise,
use the standard hardware torque
specification chart.

5301476F



The above parts group applies to the following Mfg. Nos.:

5901548

5901549

36" Mower Deck Group - Hanger Chains

REF NO	PART NO.	QTY.	DESCRIPTION
1	5025013X14	4	BOLT, 3/8-16 X 1-3/4 GD5 CZ
2	5025394	4	NUT, 3/8-16 HEX NYLOCK FLANGE
3	5025156	12	WASHER, 3/8 SAE
4	5025084	2	NUT, 3/8-16 HEX JAM
5	5050878X3	2	CHAIN, 5/16 GD30, 3 LINKS
6	5025128	4	NUT, 3/8-16 HEX SERRATED FLANGE
7	5100548	2	WASHER, .390 X 1.50 X .109, CZ
8	5025489	2	EYE BOLT, 3/8-16X6,3THRD,1EYE,CZ, WELDED
9	5043815	2	SPACER, .39 X 1.00 X .75, CZ
10	5025013X16	2	BOLT, 3/8-16 X 2 GD5 CZ
11	5101611	2	ADJUSTER, BRAKE LINKAGE
12	5010546	2	COLLAR, 3/8 SET
13	5025096	2	NUT, 3/8-16 HEX NYLON LOCK

Not for
Reproduction

Footnotes

The above parts group applies to the following Mfg. Nos.:

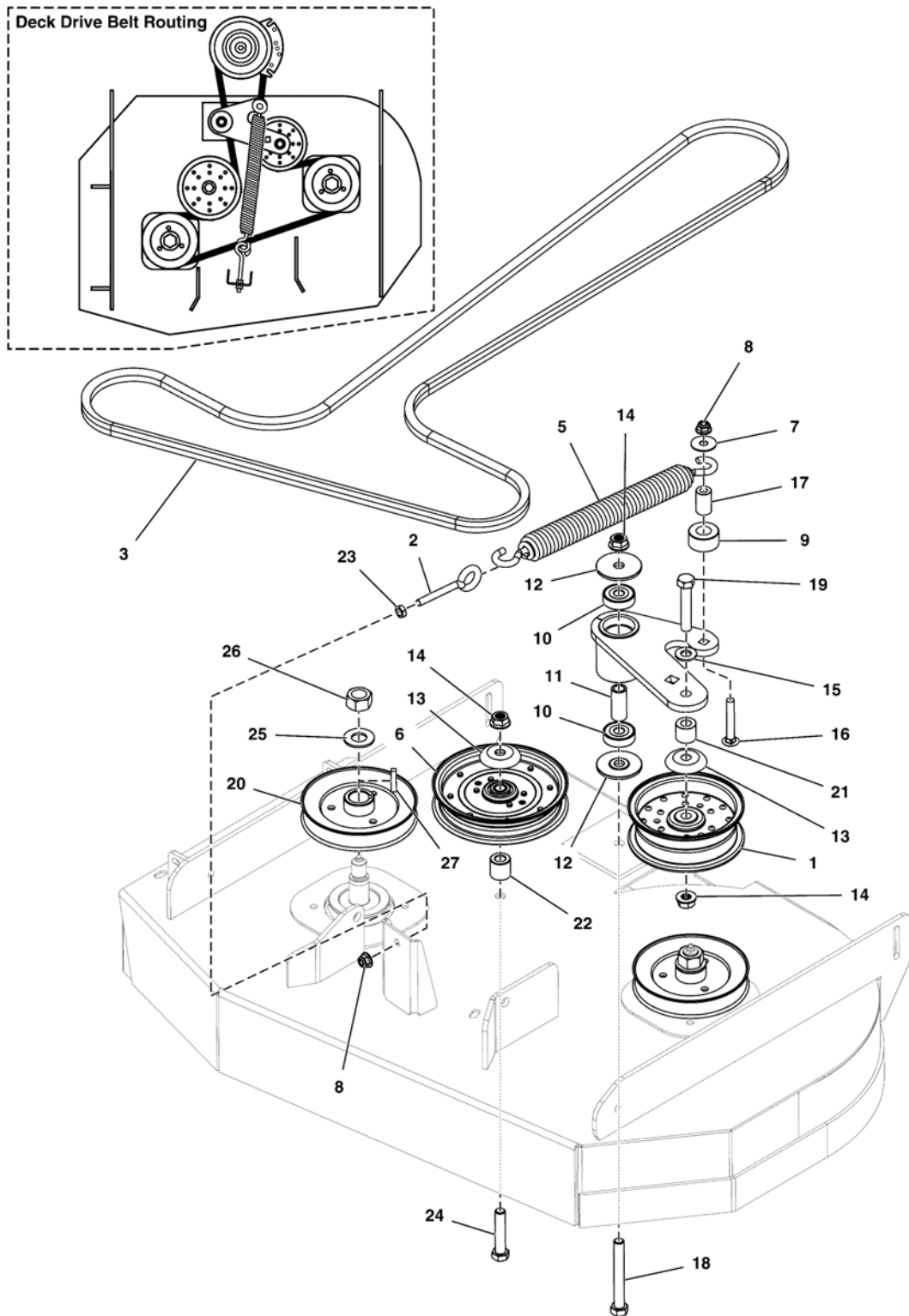
5901548

5901549

36" Mower Deck Group - Pulleys, Belt & Idler Arm

NOTE: Unless noted otherwise, use the standard hardware torque specification chart.

5304650



The above parts group applies to the following Mfg. Nos.:

5901548

5901549

36" Mower Deck Group - Pulleys, Belt & Idler Arm

REF NO	PART NO.	QTY.	DESCRIPTION
1	5101312	1	PULLEY, IDLER, 5.00 WIDE W/ .51 BORE
2	5021812	1	EYE BOLT, 3/8-16 X 6, 3THRD, 1EYE, CZ
3	5105139	1	BELT, B-SEC, 118.78" EL, 2H ARAMID, WRPD
4	5415360A	1	WELD, IDLER ARM, 36" - BLK
5	5023392	1	SPRING-EXT, 1.393 ODX13.25LGX.218WR, BLK
6	5103800	1	PULLEY, FLAT IDLER, 6-3/4"
7	5025165	1	WASHER-3/8 FENDER
8	5025394	2	NUT, 3/8-16 HEX NYLOCK FLANGE
9	5400756	1	SPACER, .76X 1.50 X .79, CZ
10	5104383	2	BEARING, 6203-1/2", SEALED
11	5104381	1	SPACER, .510 X .750 X 1.749, CZ
12	5104379	2	SPACER, IDLER ARM, 1/2 X 2.25
13	5101103	2	SHIELD, PULLEY BEARING, CZ
14	5025396	2	NUT, 1/2-13 HEX NYLOCK FLANGE
15	5025158	1	WASHER, 1/2 SAE
16	5025146X20	1	BOLT, 3/8-16 X 2-1/2, CARRIAGE, GD5, CZ
17	5101245	1	SPACER, .38 X .75 X 1.25, CZ
18	5025017X32	1	BOLT, 1/2-13 X 4 GD5 CZ
19	5025017X22	1	BOLT, 1/2-13 X 2-3/4 GD5 CZ
20	5101351	2	PULLEY, 5.926OB X .985ID, SINGLE B-SEC
21	5044673	1	SPACER, .52 X 1.00 X .88, PM, CZ
22	5049777	1	SPACER, .52 X 1.00 X 1.00
23	5025084	1	NUT, 3/8-16 HEX JAM
24	5025017X20	1	BOLT, 1/2-13 X 2-1/2 GD5 CZ
25	5025406	2	WASHER, 3/4 BELLEVILLE CL/ZC
26	5025405	2	NUT, 3/4-16 HEX
27	5050407X10	2	KEY, 1/4 SQ X 1-1/4

Footnotes

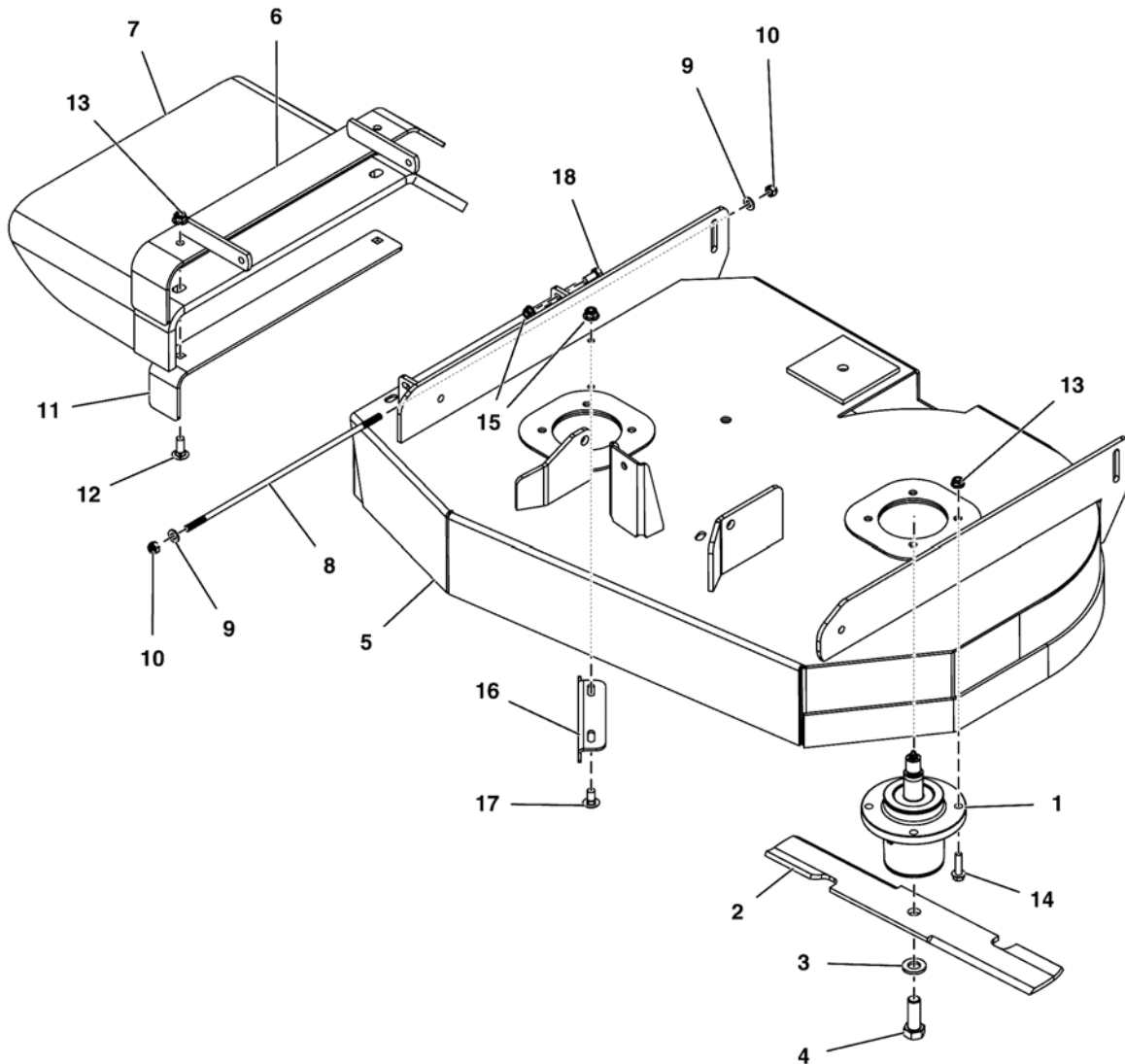
The above parts group applies to the following Mfg. Nos.:

5901548
5901549

36" Mower Deck Group - Housing, Covers, Spindles & Blades

NOTE: Unless noted otherwise,
use the standard hardware torque
specification chart.

5304651
5304844



The above parts group applies to the following Mfg. Nos.:

5901548
5901549

36" Mower Deck Group - Housing, Covers, Spindles & Blades

REF NO	PART NO.	QTY.	DESCRIPTION
1	5061095	2	SPINDLE, ASSM, ALUMINUM - 5.25
2	5101756X2	1	BLADE SET, 36 DECK (2)
3	5025477	2	WASHER, BLADE BOLT, 9/16" F436, CZ
4	5025320X14	2	BOLT, 5/8-11 X 1-3/4 GD8
5	5600982	1	DECK SHELL W/DECALS, 36, F60Z (5415641B)
6	5413404A	1	WELD, MOUNT, DISCHARGE CHUTE - BLK
7	5413498	1	CHUTE, RUBBER DISCHARGE CHUTE (5104441)
8	5042555	1	ROD, 5/16 X 13.75, TBE, CZ
9	5025155	2	WASHER, 5/16 SAE
10	5025045	2	NUT, 5/16-24 HEX NYLON LOCK
11	5413401A	1	SUPPORT, DISCHARGE CHUTE - BLK
12	5025146X12	2	BOLT, 3/8-16 X 1-1/2, CARRIAGE, GD5, CZ
13	5025394	10	NUT, 3/8-16 HEX NYLOCK FLANGE
14	5025390X10	8	BOLT, 3/8-16 X 1 1/4 FLANGE
15	5025392	3	NUT, 5/16-18 HEX NYLOCK FLANGE
16	5415547A	1	PLATE, DEFLECTOR, 36" - BLK
17	5025145X6	2	BOLT, 5/16-18 X 3/4, CARRIAGE
18	5025011X6	1	BOLT, 5/16-18 X 3/4 GD5 CZ

Not for
Reproduction

Footnotes

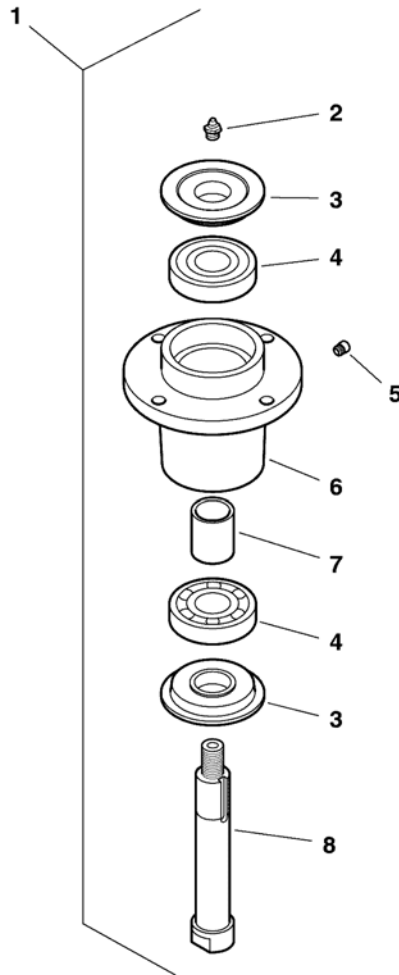
The above parts group applies to the following Mfg. Nos.:

5901548
5901549

Spindle Service Parts - 5061095

NOTE: Unless noted otherwise,
use the standard hardware torque
specification chart.

5061095



The above parts group applies to the following Mfg. Nos.:

5901548

5901549

Spindle Service Parts - 5061095

REF NO	PART NO.	QTY.	DESCRIPTION
1	5061095	1	ASSM, SPINDLE, LOW PROFILE (Nut and Washer Sold Separately)
2	5023329	1	FITTING
3	5049793	2	SHIELD, TRASH
4	5023330	2	BEARING, .98 X 2.44 X .67
5	5023296	1	FITTING, RELIEF, 1-5 PSI
6	5061097	1	HOUSING, SPINDLE
7	5061099	1	SPACER
8	5061098	1	SHAFT, SPINDLE

Not for
Reproduction

Footnotes

The above parts group applies to the following Mfg. Nos.:

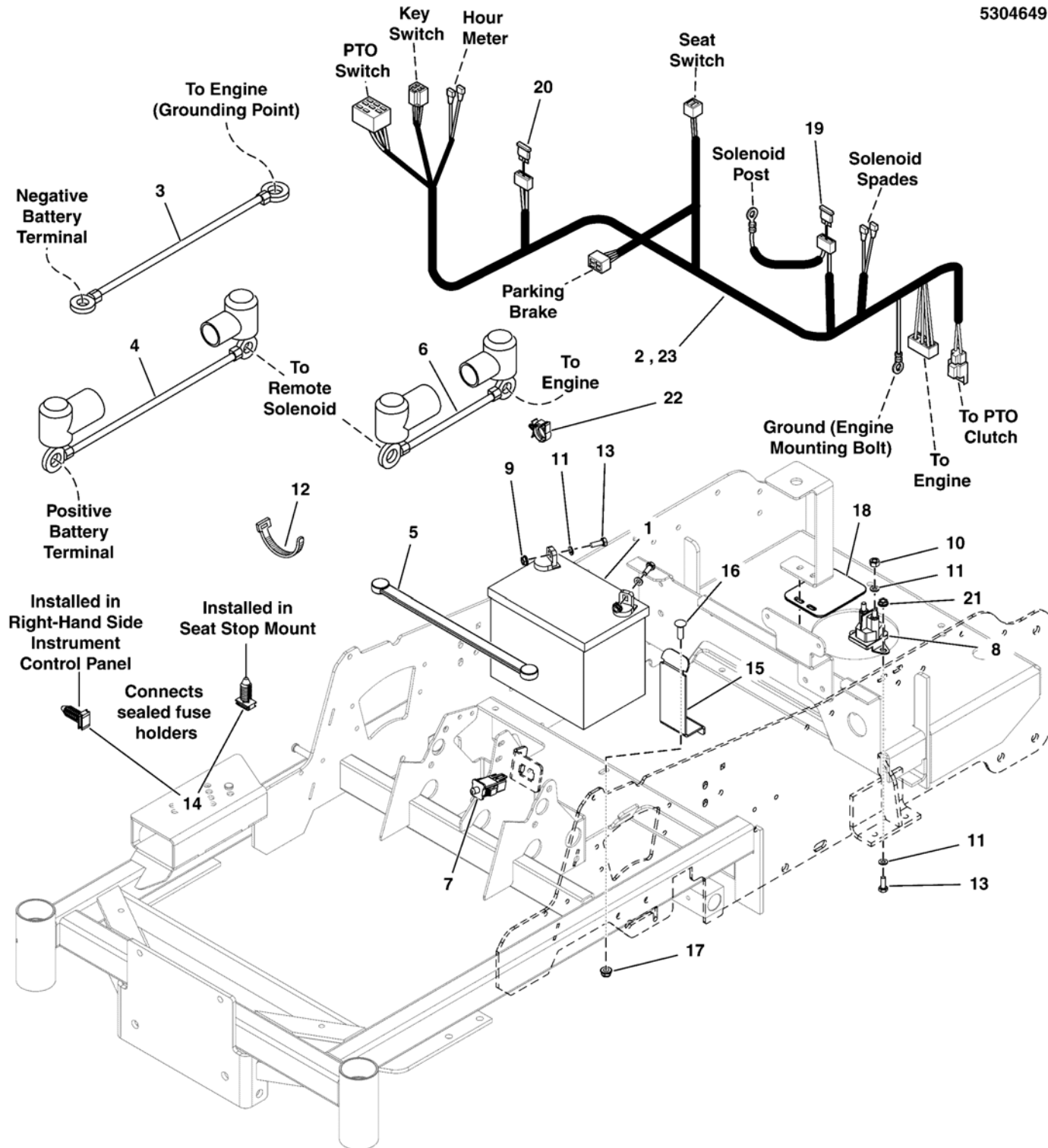
5901548

5901549

Electrical Group - Briggs & Stratton

NOTE: Unless noted otherwise, use the standard hardware torque specification chart.

5304649



The above parts group applies to the following Mfg. Nos.:
5901548

Electrical Group - Briggs & Stratton

REF NO	PART NO.	QTY.	DESCRIPTION
1	--	1	BATTERY, WET (BCIU1, 350 CCA)
2	5415589	1	WIRE HARNESS, MAIN, PROSUMER, NO NEUTRAL (S/N: 2017633638 & Below)
3	5101396	1	BATTERY CABLE, NEG, 30, 1/4-5/16
4	5021405	1	BATTERY CABLE, POS, 22, 1/4-5/16
5	1722009	1	STRAP-BLACK RUBB
6	5044732	1	BATTERY CABLE, POS, 8, 1/4-5/16
7	7022886	1	SWITCH, DP NO/NC SNAP-IN
8	1755382	1	SOLENOID, STD-BRACKET, 2-SPADE
9	5025126	5	NUT, 1/4-20 HEX SERR. FLANGE
10	80003921	2	NUT, 1/4-20,KEPS,CONICAL WSHR,ZC/CL
11	5025154	8	WASHER, 1/4 SAE
12	5021029	8	TIE, SELF-LOCKING, 12"
13	5025010X5	6	BOLT-1/4-20 X 5/8 GD5 CZ
14	5103761	2	FIR TREE MOUNT, PACKARD
15	5415727A	1	PLATE, HARNESS/BATTERY SUPPORT - BLK
16	5025145X8	1	BOLT, 5/16-18 X 1, CARRIAGE
17	5025392	1	NUT, 5/16-18 HEX NYLOCK FLANGE
18	5415767A	1	PLATE, SOLENOID COVER - BLK
19	5021603	1	FUSE, ATO, 20 AMP (SV)
20	5101935	1	FUSE, ATO-15 (15 AMP) (SV)
21	5025391	2	NUT, 1/4-20 HEX NYLOCK FLANGE
22	5104705	1	ROSEBUD LOOM CLIP
23	5416016	1	WIRE HARNESS, MAIN, SM, ZTR (S/N: 2017633639 & Above)

Footnotes

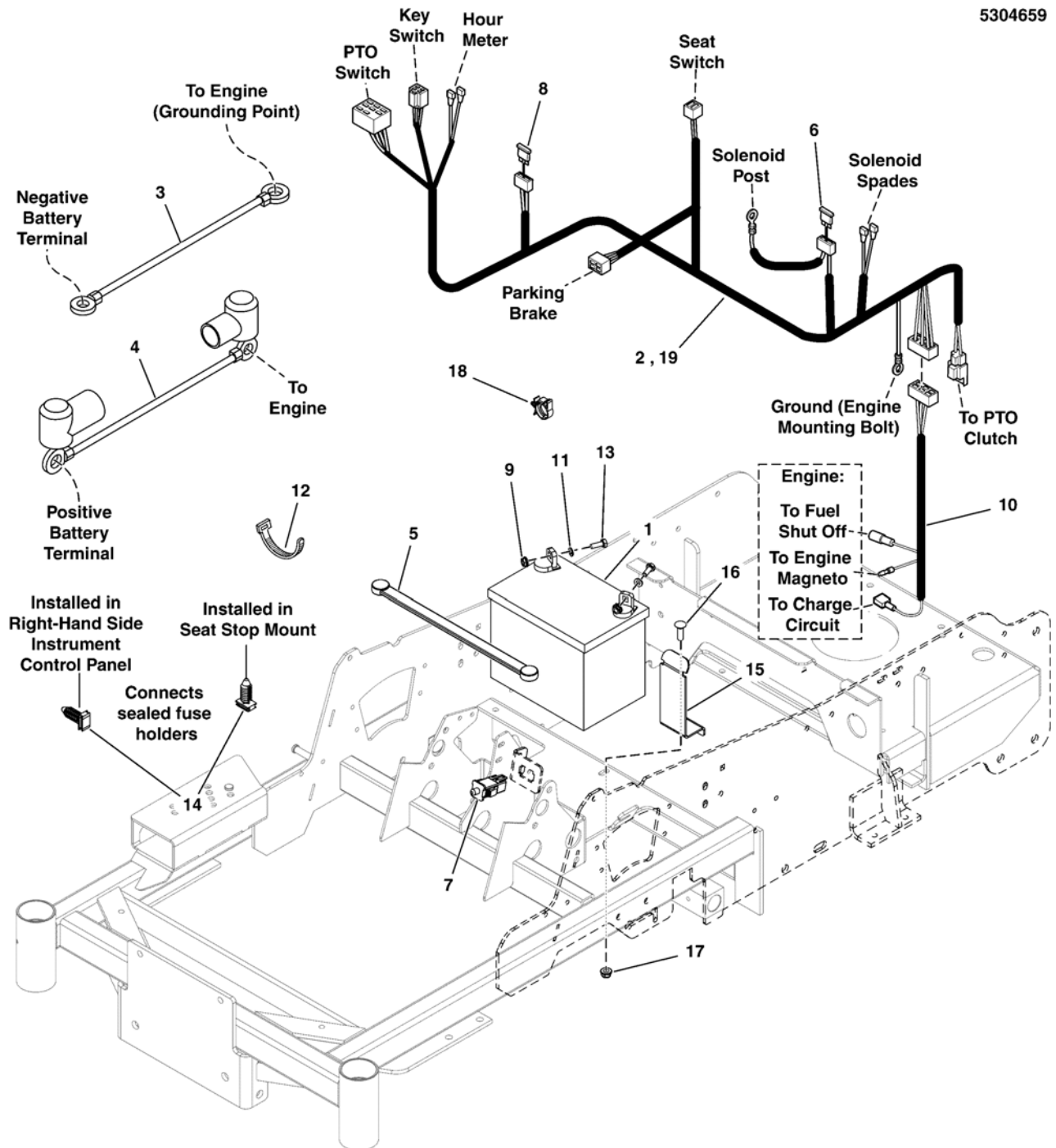
The above parts group applies to the following Mfg. Nos.:

5901548

Electrical Group - Kawasaki

NOTE: Unless noted otherwise, use the standard hardware torque specification chart.

5304659



The above parts group applies to the following Mfg. Nos.:
 5901549

Electrical Group - Kawasaki

REF NO	PART NO.	QTY.	DESCRIPTION
1	5020798	1	BATTERY, WET (BCIU1, 350 CCA)
2	5415589	1	WIRE HARNESS, MAIN, PROSUMER, NO NEUTRAL (S/N: 2017633638 & Below)
3	5045894	1	BATTERY CABLE, NEG, 35, 1/4-5/16
4	5021542	1	BATTERY CABLE, POS, 30, 1/4-5/16
5	1722009	1	STRAP-BLACK RUBB
6	5021603	1	FUSE, ATO, 20 AMP (SV)
7	7022886	1	SWITCH, DP NO/NC SNAP-IN
8	5101935	1	FUSE, ATO-15 (15 AMP) (SV)
9	5025126	4	NUT, 1/4-20 HEX SERR. FLANGE
10	5104811	1	WIRE HARNESS, JUMPER, KAWI
11	5025154	2	WASHER, 1/4 SAE
12	5021029	8	TIE, SELF-LOCKING, 12"
13	5025010X6	4	BOLT, 1/4-20 X 3/4 GD5 CZ
14	5103761	2	FIR TREE MOUNT, PACKARD
15	5415727A	1	PLATE, HARNESS/BATTERY SUPPORT - BLK
16	5025145X8	1	BOLT, 5/16-18 X 1, CARRIAGE
17	5025392	1	NUT, 5/16-18 HEX NYLOCK FLANGE
18	5104705	1	ROSEBUD LOOM CLIP
19	5416016	1	WIRE HARNESS, MAIN, SM, ZTR (S/N: 2017633639 & Above)

Not for
Reproduction

Footnotes

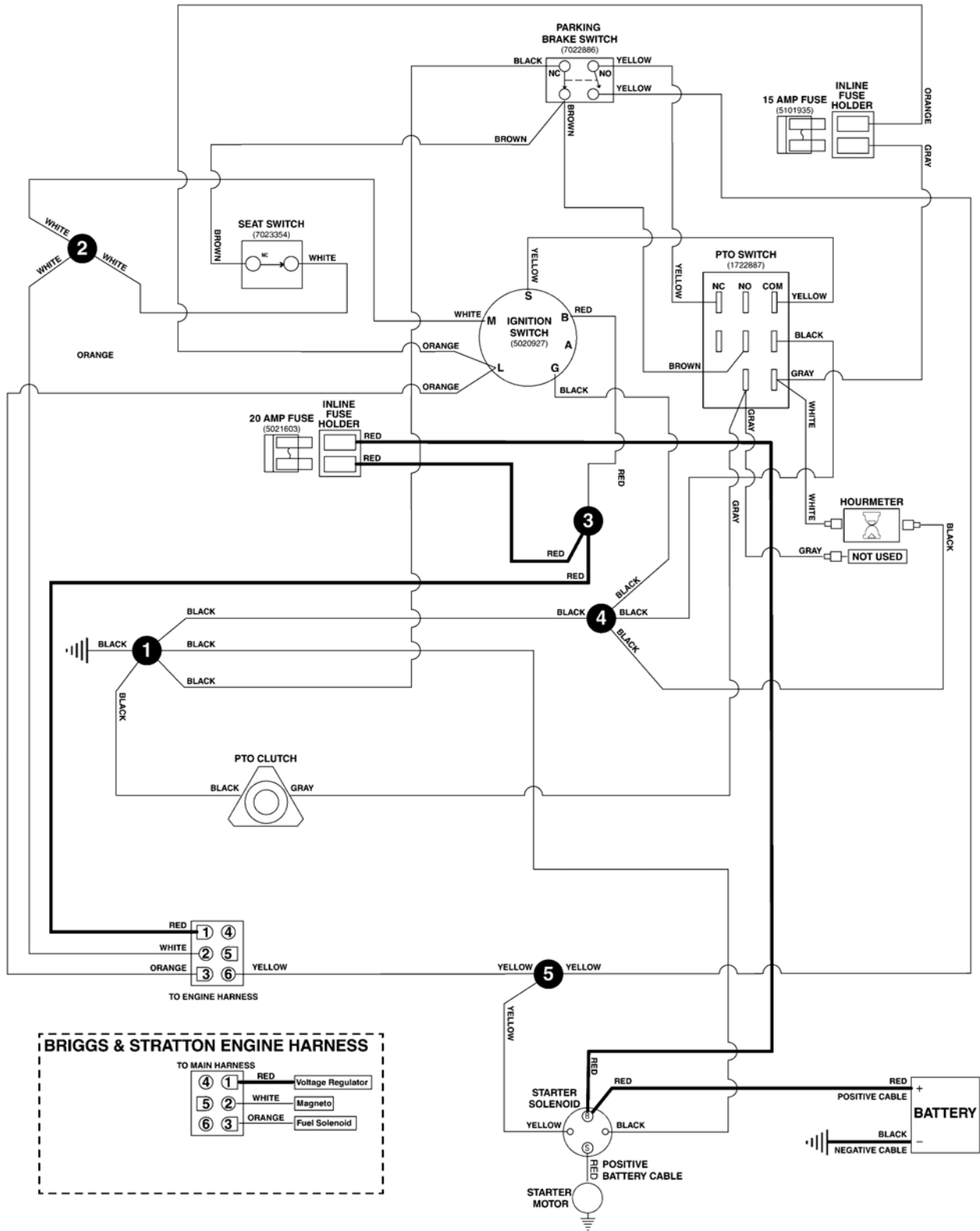
The above parts group applies to the following Mfg. Nos.:

5901549

Electrical Schematic - Charging Circuit - Small ZTR, B&S 44T977

5416016 (5415589) MAIN WIRE HARNESS - BRIGGS & STRATTON 44T977 ENGINES
 (If internal schematic of the switch is not shown, the image of the switch represents the back view of the connector as it is connected to the switch.)

5416016A



The above parts group applies to the following Mfg. Nos.:

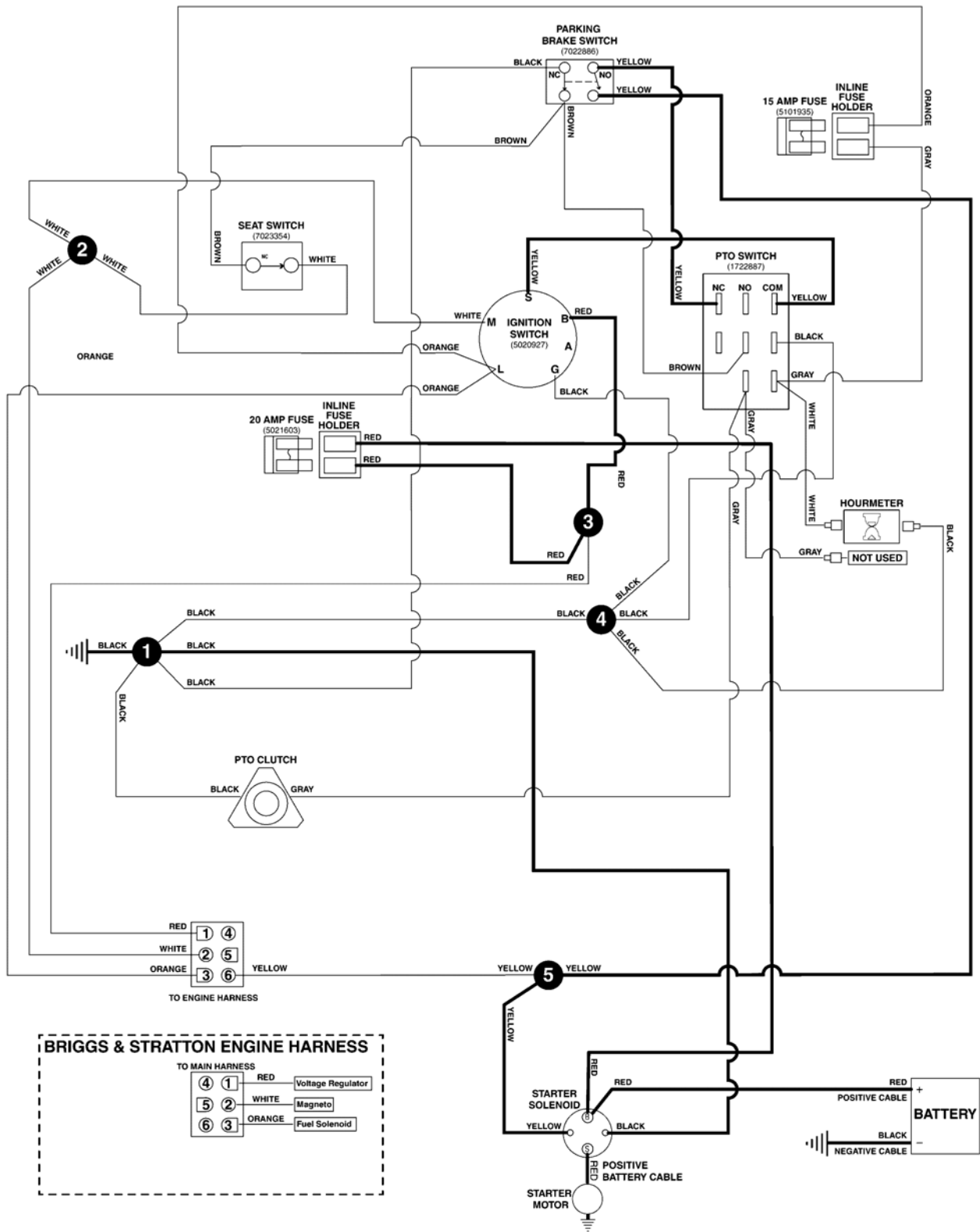
5901548 - F6

Electrical Schematic - Cranking Circuit - Small ZTR, B&S 44T977

5416016 (5415589) MAIN WIRE HARNESS - BRIGGS & STRATTON 44T977 ENGINES

5416016A

(If internal schematic of the switch is not shown, the image of the switch represents the back view of the connector as it is connected to the switch.)



The above parts group applies to the following Mfg. Nos.:

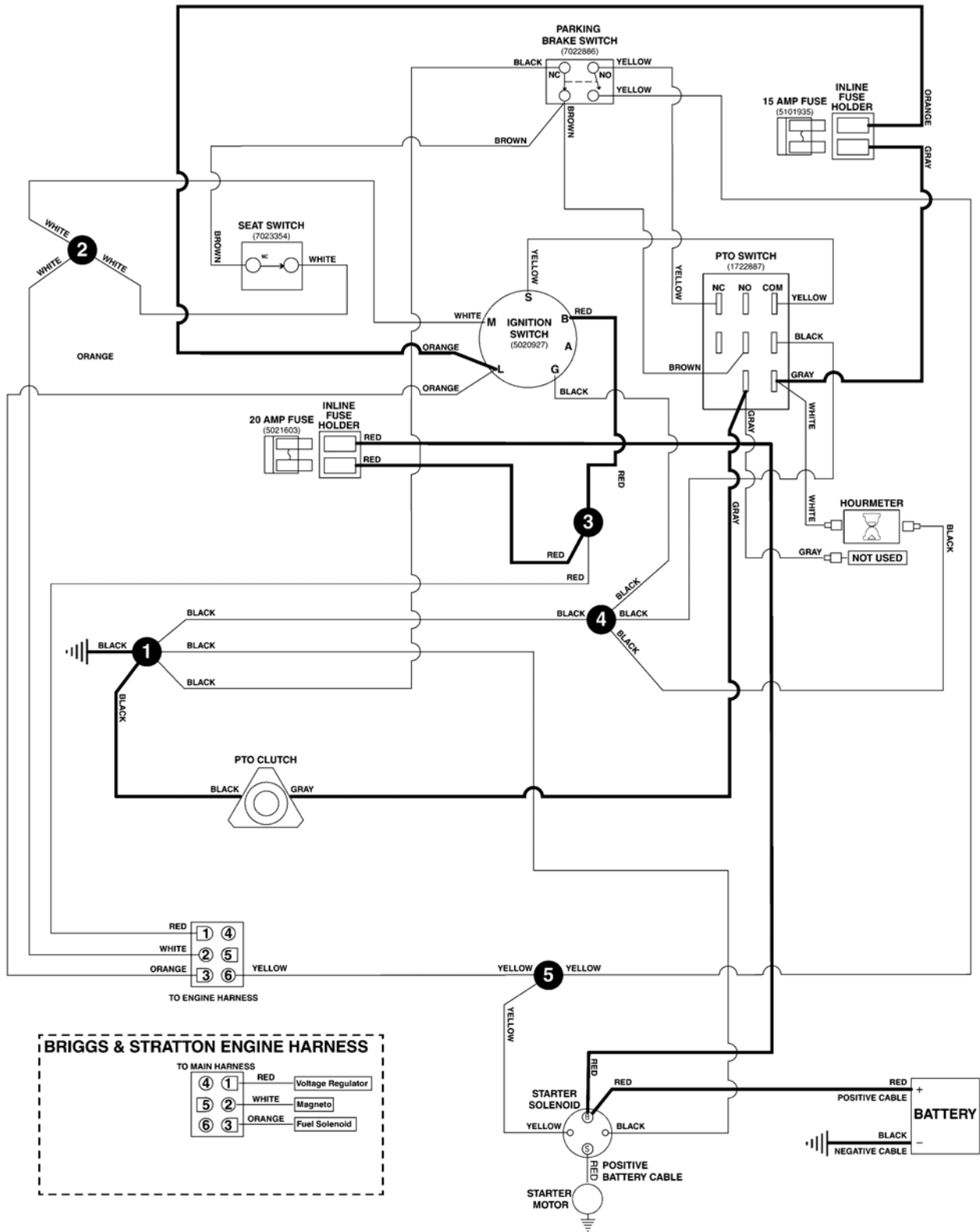
5901548 - F6

Electrical Schematic - PTO Clutch Circuit - Small ZTR, B&S 44T977

5416016 (5415589) MAIN WIRE HARNESS - BRIGGS & STRATTON 44T977 ENGINES

5416016A

(If internal schematic of the switch is not shown, the image of the switch represents the back view of the connector as it is connected to the switch.)



The above parts group applies to the following Mfg. Nos.:

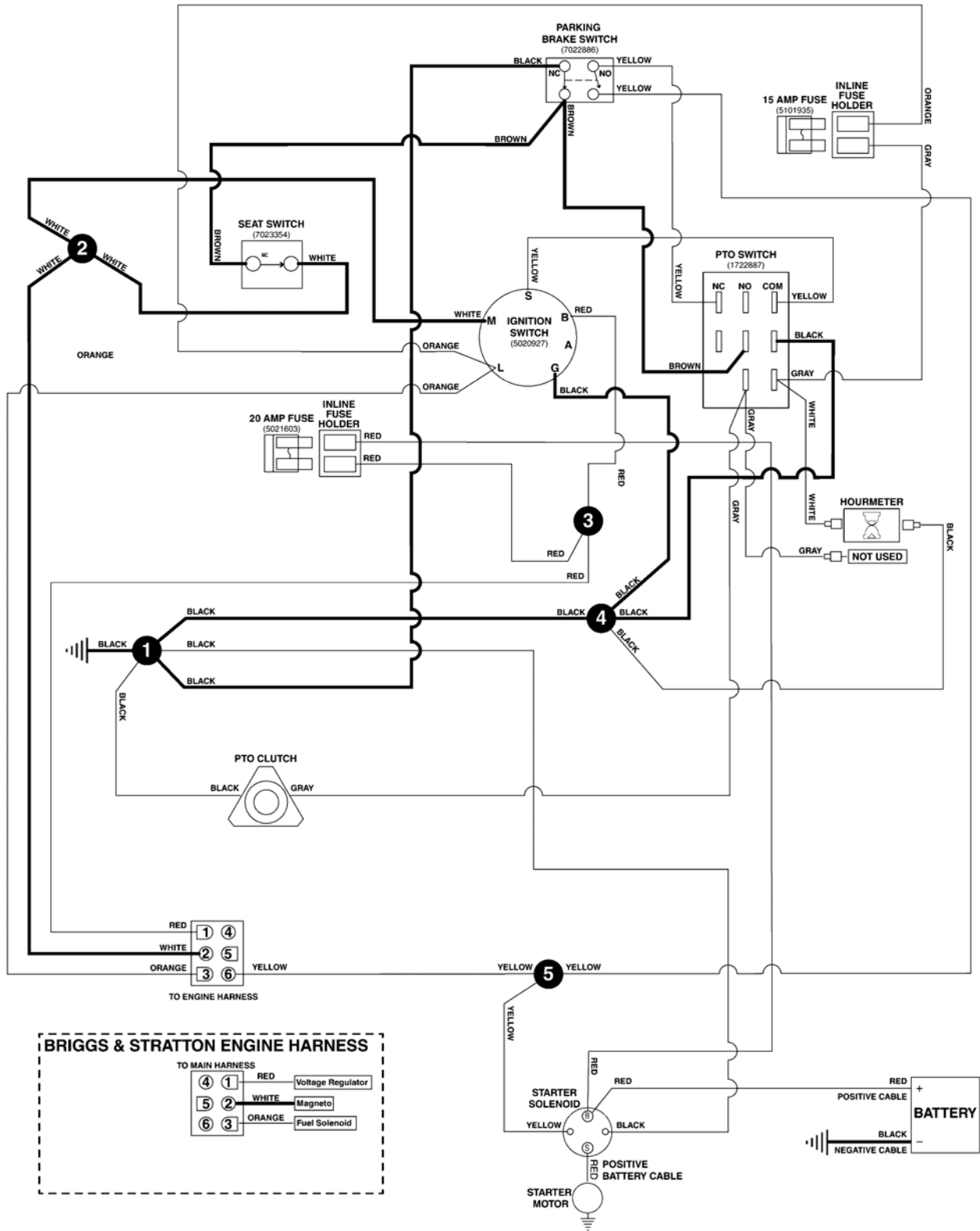
5901548 - F6

Electrical Schematic - Ign. Ground Circuit/Op Pres. - Small ZTR, B&S 44T977

5416016 (5415589) MAIN WIRE HARNESS - BRIGGS & STRATTON 44T977 ENGINES

5416016A

(If internal schematic of the switch is not shown, the image of the switch represents the back view of the connector as it is connected to the switch.)



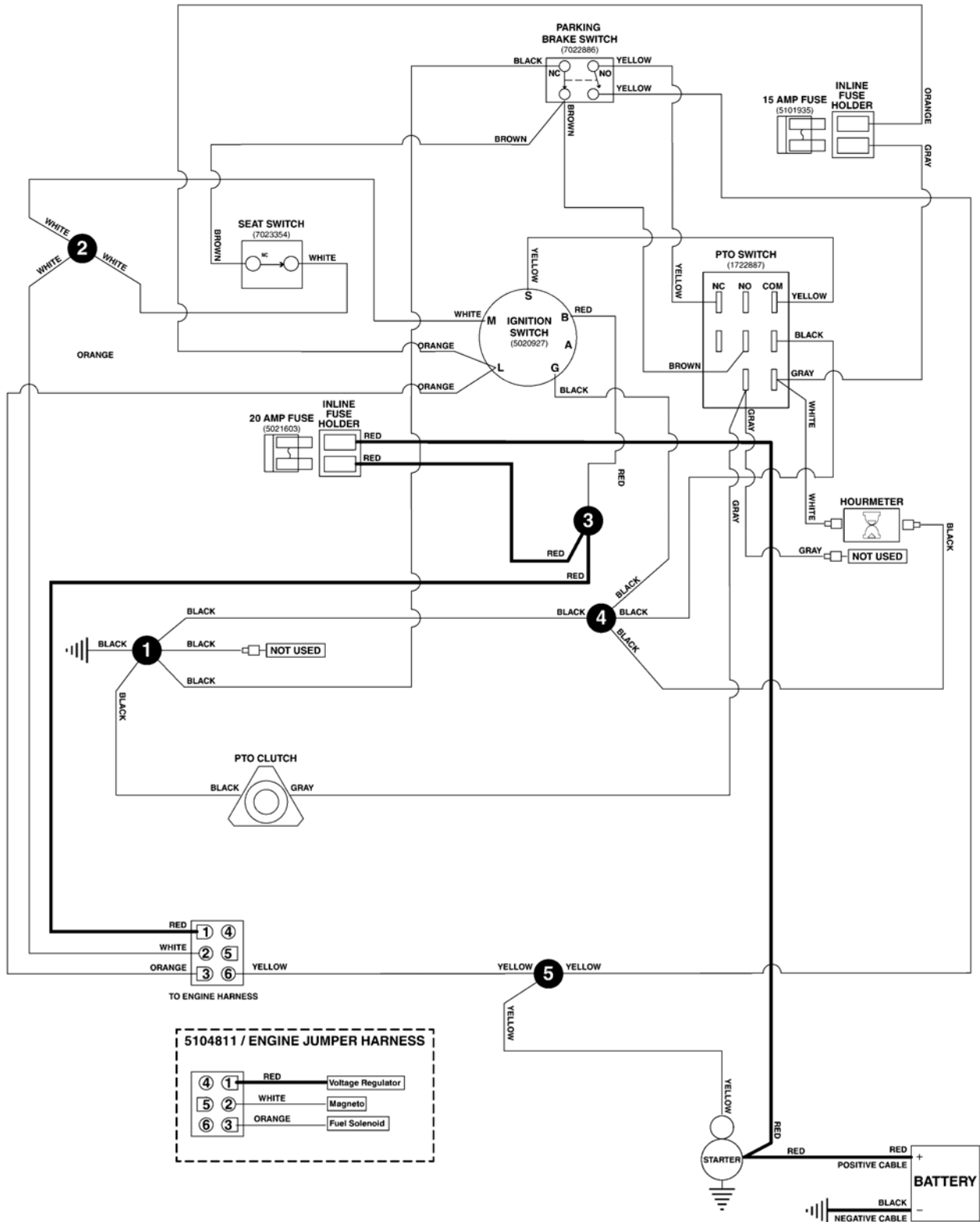
The above parts group applies to the following Mfg. Nos.:

5901548 - F6

Electrical Schematic - Charging Circuit - Small ZTR, Kawi FX600V

5416016 (5415589) MAIN WIRE HARNESS - KAWASAKI FX600V ENGINES
 (If internal schematic of the switch is not shown, the image of the switch represents the back view of the connector as it is connected to the switch.)

5416016B

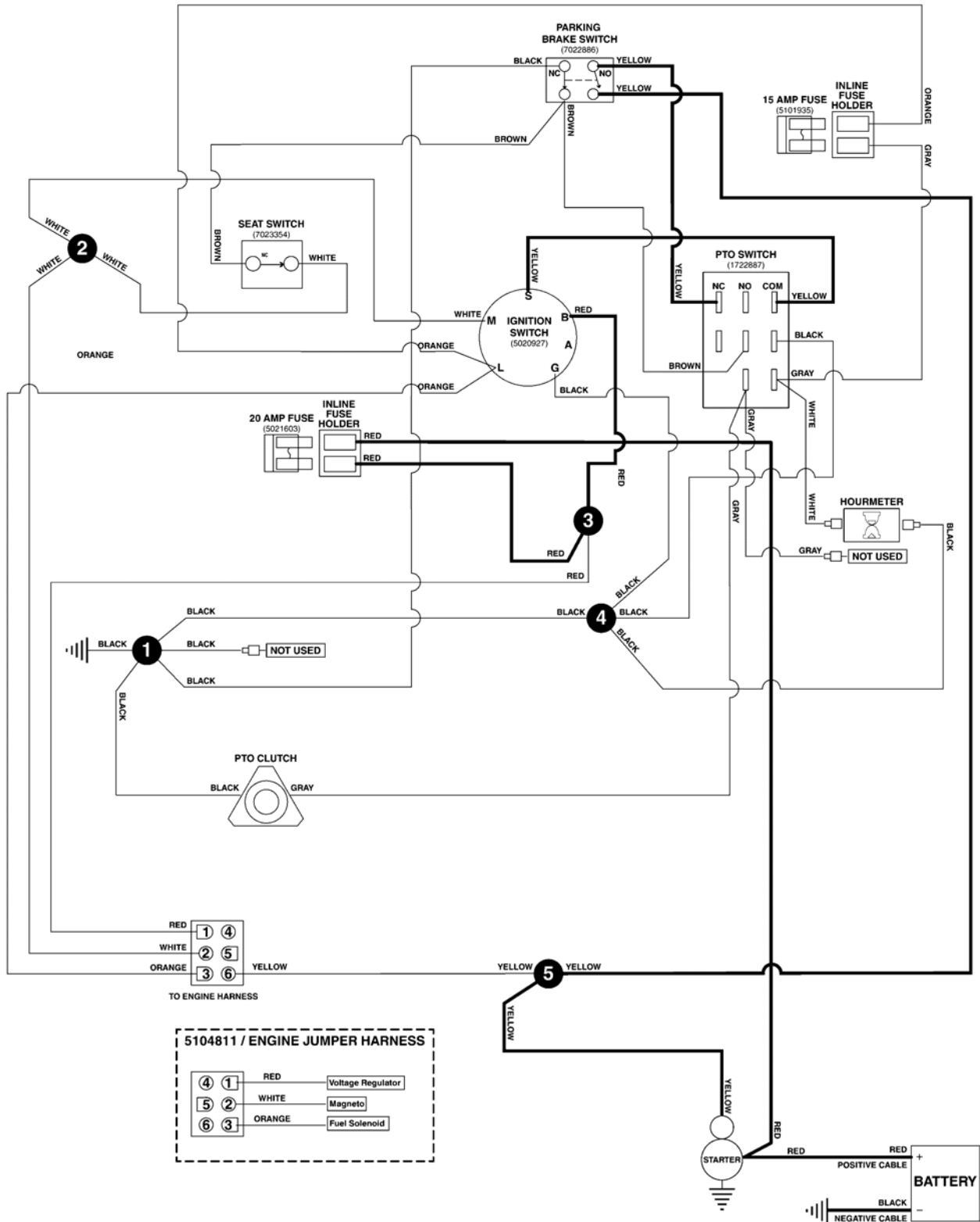


The above parts group applies to the following Mfg. Nos.:
 5901549 - F6

Electrical Schematic - Cranking Circuit - Small ZTR, Kawi FX600V

5416016 (5415589) MAIN WIRE HARNESS - KAWASAKI FX600V ENGINES
 (If internal schematic of the switch is not shown, the image of the switch represents the back view of the connector as it is connected to the switch.)

5416016B



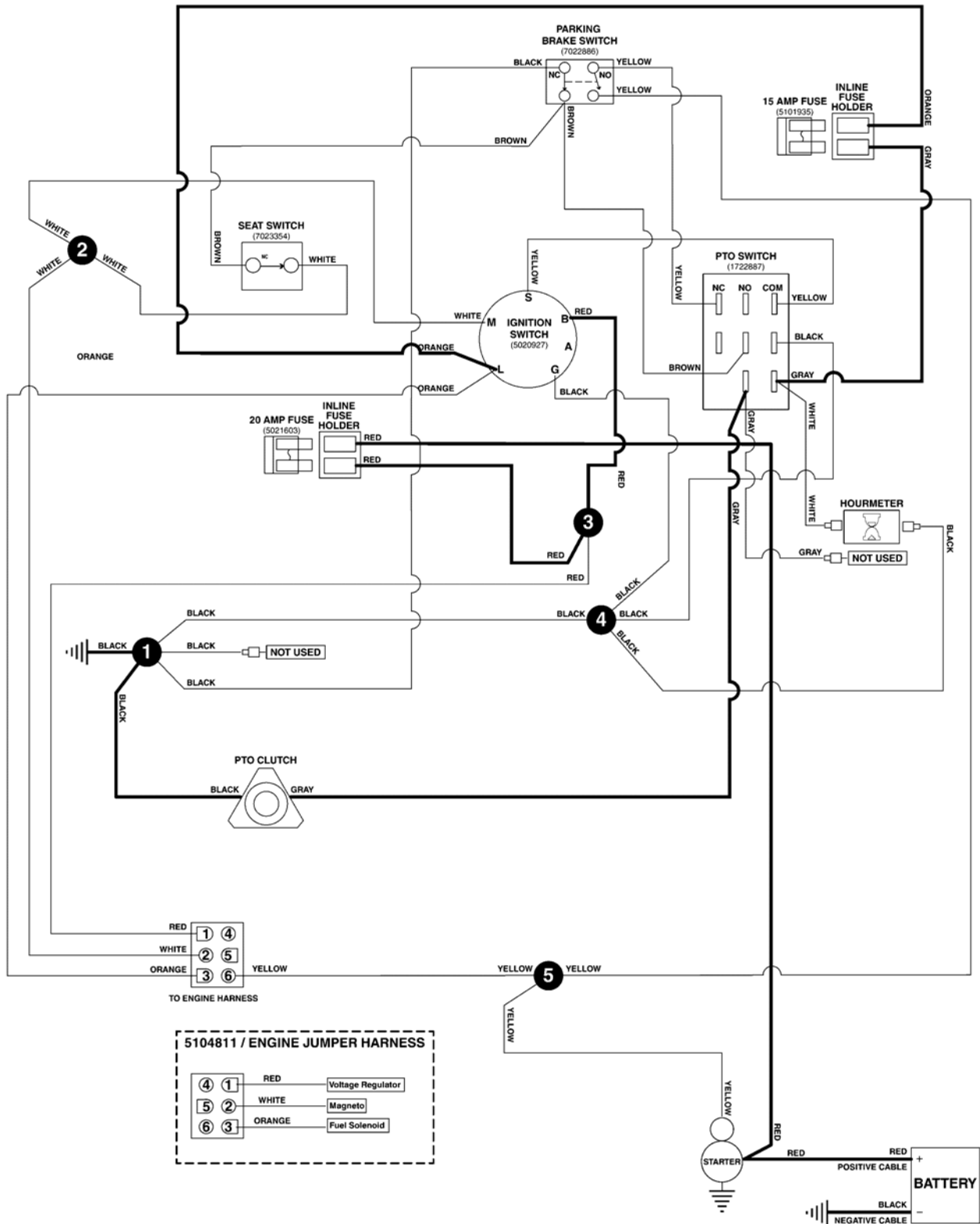
The above parts group applies to the following Mfg. Nos.:
 5901549 - F6

Electrical Schematic - PTO Clutch Circuit - Small ZTR, Kawi FX600V

5416016 (5415589) MAIN WIRE HARNESS - KAWASAKI FX600V ENGINES

5416016B

(If internal schematic of the switch is not shown, the image of the switch represents the back view of the connector as it is connected to the switch.)



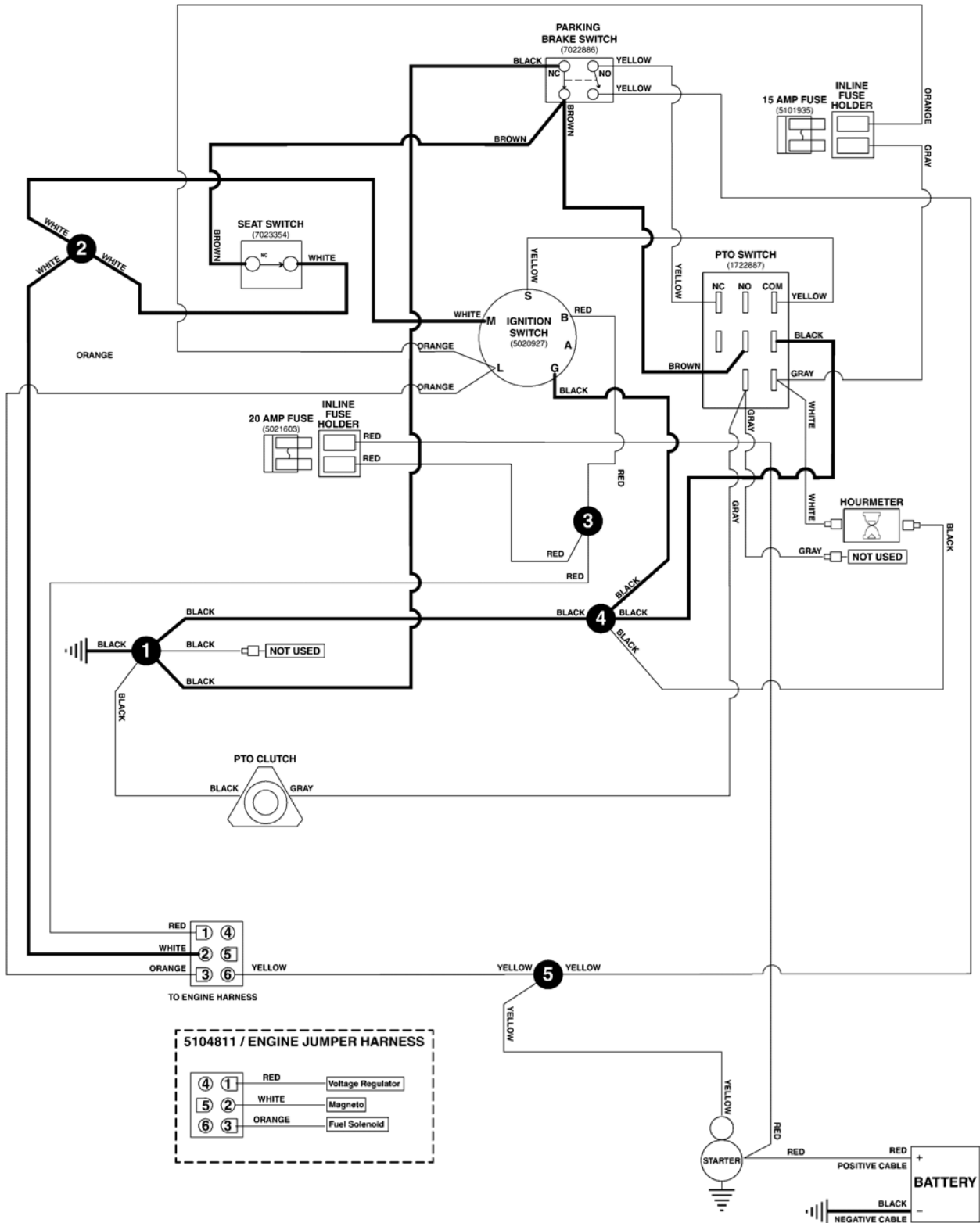
The above parts group applies to the following Mfg. Nos.:

5901549 - F6

Electrical Schematic - Ign. Ground Circuit/Op Pres. - Small ZTR, Kawi FX600V

5416016 (5415589) MAIN WIRE HARNESS - KAWASAKI FX600V ENGINES
 (If internal schematic of the switch is not shown, the image of the switch represents the back view of the connector as it is connected to the switch.)

5416016B



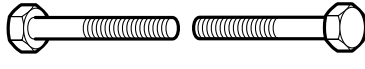
The above parts group applies to the following Mfg. Nos.:
 5901549 - F6

Not for
Reproduction

Hardware Identification & Torque Specifications

Common Hardware Types

Hex Head Capscrew



Washer



Lockwasher



Carriage Bolt



Hex Nut

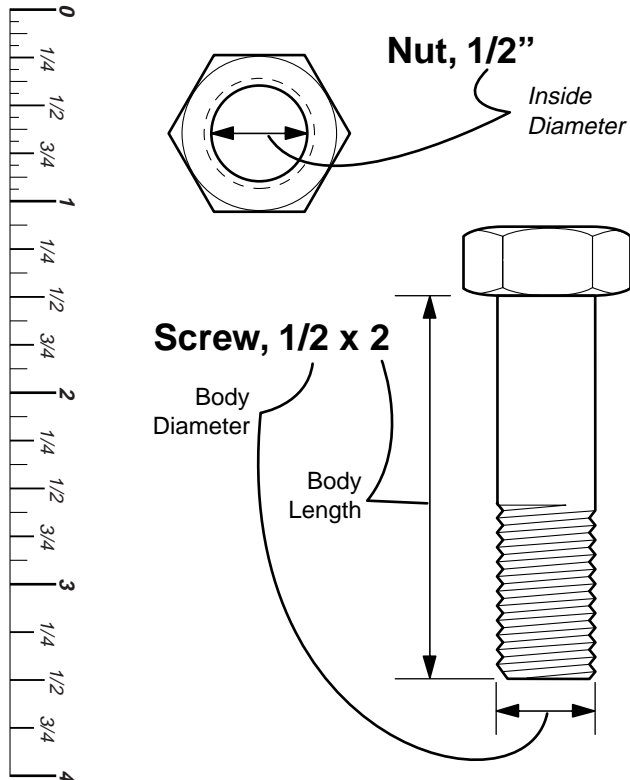


Standard Hardware Sizing

When a washer or nut is identified as $1/2''$, this is the *Nominal size*, meaning the *inside diameter* is $1/2$ inch; if a second number is present it represents the *threads per inch*

When bolt or capscrew is identified as $1/2 - 16 \times 2''$, this means the *Nominal size*, or *body diameter* is $1/2$ inch; the second number represents the *threads per inch* (16 in this example, and the final number is the *body length* of the bolt or screw (in this example 2 inches long).

The guides and ruler furnished below are designed to help you select the appropriate hardware and tools.



Torque Specification Chart

FOR STANDARD MACHINE HARDWARE (Tolerance $\pm 20\%$)

Hardware Grade	No Marks SAE Grade 2		SAE Grade 5		SAE Grade 8	
	in/lbs ft/lbs	Nm.	in/lbs ft/lbs	Nm.	in/lbs ft/lbs	Nm.
8-32	19	2.1	30	3.4	41	4.6
8-36	20	2.3	31	3.5	43	4.9
10-24	27	3.1	43	4.9	60	6.8
10-32	31	3.5	49	5.5	68	7.7
1/4-20	66	7.6	8	10.9	12	16.3
1/4-28	76	8.6	10	13.6	14	19.0
5/16-18	11	15.0	17	23.1	25	34.0
5/16-24	12	16.3	19	25.8	27	34.0
3/8-16	20	27.2	30	40.8	45	61.2
3/8-24	23	31.3	35	47.6	50	68.0
7/16-14	30	40.8	50	68.0	70	95.2
7/16-20	35	47.6	55	74.8	80	108.8
1/2-13	50	68.0	75	102.0	110	149.6
1/2-20	55	74.8	90	122.4	120	163.2
9/16-12	65	88.4	110	149.6	150	204.0
9/16-18	75	102.0	120	163.2	170	231.2
5/8-11	90	122.4	150	204.0	220	299.2
5/8-18	100	136	180	244.8	240	326.4
3/4-10	160	217.6	260	353.6	386	525.0
3/4-16	180	244.8	300	408.0	420	571.2
7/8-9	140	190.4	400	544.0	600	816.0
7/8-14	155	210.8	440	598.4	660	897.6
1-8	220	299.2	580	788.8	900	1,244.0
1-12	240	326.4	640	870.4	1,000	1,360.0

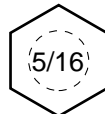
NOTES

- These torque values are to be used for all hardware excluding: locknuts, self-tapping screws, thread forming screws, sheet metal screws and socket head setscrews.
- Recommended seating torque values for locknuts:
 - for prevailing torque locknuts - use 65% of grade 5 torques.
 - for flange whizlock nuts and screws - use 135% of grade 5 torques.
- Unless otherwise noted on assembly drawings, all torque values must meet this specification.

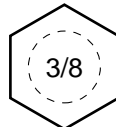
Wrench & Fastener Size Guide



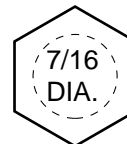
$1/4''$ Bolt or Nut
Wrench— $7/16''$



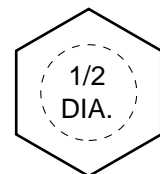
$5/16''$ Bolt or Nut
Wrench— $1/2''$



$3/8''$ Bolt or Nut
Wrench— $9/16''$



$7/16''$ Bolt or Nut
Wrench (Bolt)— $5/8''$
Wrench (Nut)— $11/16''$



$1/2''$ Bolt or Nut
Wrench— $3/4''$

Parts Manual F60Z Series

Zero-Turn Riding Mower

Not for
Reproduction

IT IS THE POLICY OF BRIGGS STRATTON TO IMPROVE ITS PRODUCTS WHENEVER IT IS POSSIBLE AND PRACTICAL TO DO SO. WE RESERVE THE RIGHT TO MAKE CHANGES OR ADD IMPROVEMENTS AT ANY TIME WITHOUT INCURRING ANY OBLIGATION TO MAKE SUCH CHANGES ON PRODUCTS MANUFACTURED

Briggs and Stratton Power Products Group, LLC.

5375 North Main Street
Munnsville, NY 13409 USA
800-933-6175

www.ferrisindustries.com

© Copyright 2016 Briggs and Stratton Corporation
All Rights Reserved. Printed In USA.